

RESEARCH

Open Access

Differences in biomass yield development of early, medium, and late maize varieties during the 21st century in Northern Germany

Jan F Degener* and Martin Kappas

Abstract

Background: Though there exists a general notion on how maize yields might develop throughout Europe during the current century, modeling approaches on a regional level that account for small-scale variations are not yet universally available. Furthermore, many studies only refer to one variety of maize. However, the few studies that include at least two varieties indicate that the respective choice will play a major role in how the yields will develop under a changing climate throughout the 21st century. This study will evaluate how far this choice of variety will affect future yields, identify the main factors to explain potential differences, and determine the magnitude of spatial variability.

Results: The results suggest clearly differentiated development paths of all varieties. All varieties show a significant positive trend until the end of the century, though the medium variety also shows a significant decline of 5% during the first 30 years and only a slight recovery towards +5% around the century's end. The late variety has the clearest and strongest positive trend, with peaks of more than +30% increase of biomass yields and around 25% average increase in the last three decades. The early variety can be seen as in-between, with no negative but also not an as-strong positive development path. All varieties have their strongest increase after the mid of the 21st century. Statistical evaluation of these results suggests that the shift from a summer rain to a winter rain climate in Germany will be the main limiting factor for all varieties. In addition, summer temperatures will become less optimal for all maize crops. As the data suggests, the increasing atmospheric CO₂ concentrations will play a critical role in reducing the crops water uptake, thus enabling yield increases in the first place.

Conclusions: This study clearly shows that maize yields will develop quite differently under the assumed climatic changes of the 21st century when different varieties are regarded. However, the predominant effect is positive for all discussed varieties and expected to be considerably stronger in the second half of the century.

Keywords: Maize varieties; Climate change; Crop yield; Summer drought; Carbon dioxide

Background

With a production of around 875 Mt, maize was the second most grown crop on earth in 2012, only surpassed by sugarcane and surpassing rice (3rd 718 Mt) and wheat (4th 675 Mt). However, in terms of nutrition, rice and wheat provided around 3.8 times more calories to the world's average human [1]. This spread in the data is a clear indicator for the variety of usage that maize allows for, from

its first and foremost use as feed for livestock to a raw material for energy purposes.

As of 2012, like most years before, Lower Saxony (LS) constituted Germany's largest maize producer, accounting for more than a quarter of the 94.56 Mt total German production, while extending over merely 13% of Germany's overall territory. This is due to an over-average yield of 50.6 t/ha (avg. Germany 46.4 t/ha, at 35% dry matter) combined with a relatively large cropping area of 27% (avg. Germany 17%) of the total utilized agricultural area [2].

Around the early 1980's the cropping area of LS for silage maize leveled out at around 220,000 ha for several

*Correspondence: jdegene@gwdg.de
Department of Geography, University of Göttingen, Goldschmidtstr.5, 37077 Göttingen, Germany

years. Around 2004, this began to change rapidly. Within 5 years, the area nearly doubled; after less than a decade, the area already amounted to 514,000 ha in 2012 [3]. An early look into the matter [4] did not show any increase in the local livestock nor a dramatic change in livestock diet or related imports or exports. Even more, the maize cropping area for feed receded by 30,000 ha between 2004 and 2007. Energy maize, however, in LS, used predominantly as a regenerative power source, showed an increase in cropping area by 38,000 ha in only 1 year. Therefore, it can be safely assumed that this increase in cropping area was due to reasons other than livestock farming. While there are some propositions for alternatives to this extensive maize cultivation [5,6], its known production strategies and biomass yields will make it hard for any competing crop to replace maize. Thus, it can be assumed that maize will be around for some time, raising the question how changing regional or local conditions will affect its yield potential.

Wolf and vanDiepen [7] did an early estimation of the European grain maize yield potential, basically coming to the conclusion that no large changes are to be expected for the central part of the European Community and thus for LS. This outlook has not changed dramatically in present day studies [8], generally suggesting no trend or seldom a positive trend in rainfed maize yields for most parts of Germany. Spatial surveys covering only Germany in its entirety are relatively rare. However, it is often pointed out that maize already grows near optimal conditions in Germany and is, as of today, already limited through drought stress in its main growing period of July and August [9,10]. The expected further decline in summer precipitation of around 30% for some areas in Germany [11], however uncertain this change might be, would thus strongly limit the growing conditions of maize in these regions.

In part probably owed to the administrative structure in Germany, the assessment of climate change impacts on crops yields was mostly done on a federal state level. A wide variety of approaches (differences in climate model and dataset, crop model, reference period, etc.) make a direct comparison often difficult at least. However, results from regions close to LS are still of special interest for comparison.

The federal state of Hesse, directly to the south of LS, shows a regional differentiated pattern with a positive maize yield trend (up to +15%) in the southern part and a neutral-to-negative (mostly around -10%) northern part in the middle of the 21st century under the SRES B2 scenario [12]. To the south-west of LS lies North Rhine-Westphalia. Fröhlich [13] did show that most of the state will profit from a changing climate from a silage maize yield increase of around 2% to 4% (B1 scenario) or 3% to 7% (A1B scenario) until 2050. Saxony and Thuringia, both to the south-east of LS, have a generally negative

development until 2050 (A1B) with a decline in maize yields of roughly -10% [14,15]. Especially the study for Thuringia does show how wide these results may spread, even if climate model, scenario, and crop model are kept the same. Four alternative approaches, including more or less progress in cultivation and breeding, further differentiated by dry or moist conditions, resulted here in average yield changes from -8.2% to +38.6%.

Furthermore, Buttlar et al. [16] took a closer look at a part of LS, the region connecting the cities of Hanover, Brunswick, Göttingen, and Hildesheim. This study was, however, rather site specific, with biomass yield changes of maize between -3% and +7% (until mid-century) and -4% to +13% (end of century).

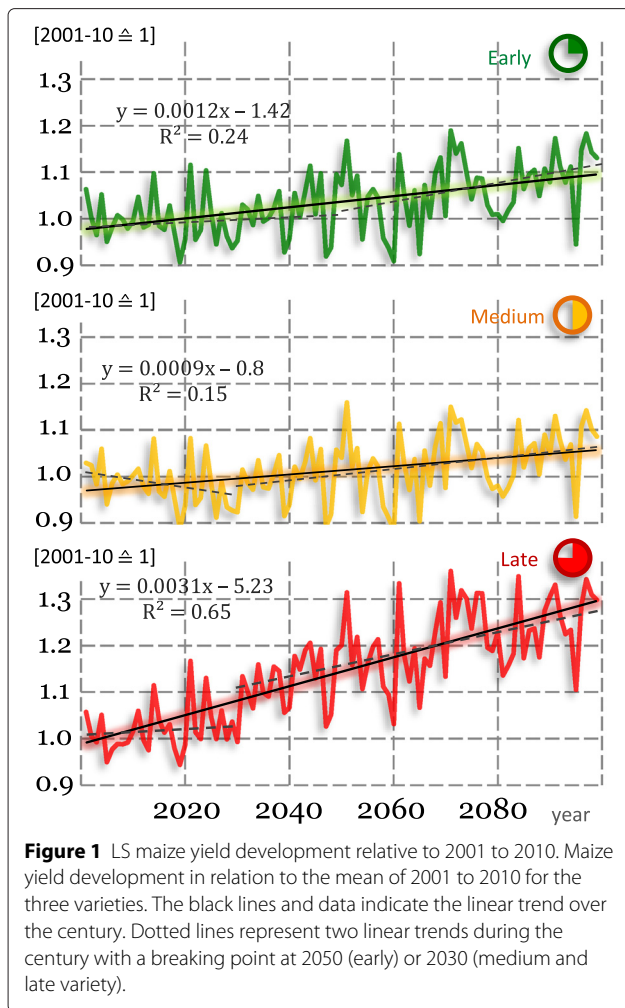
While the current study does not expect to diverge largely from these findings, a regional or even local approach was necessary as a probable basis for action of regional decision makers. An important difference to the mentioned studies lies, however, in the selection of different maize varieties. For simplification, many studies omit the use of different varieties that are differentiated only by their required temperature sums to reach their respective development stages. As Southworth et al. [17] could show in a study in the Midwestern United States, this differentiation can indeed make a difference, as heat-resistant late (or long-term) varieties did show a considerably better yield development in a future climate than varieties with less temperature requirements. However rare, if studies do evaluate distinct varieties, the findings are similar as Liu et al. [18] could show for Northeast China. Most studies, however, only hint in a more general way towards the influence of variety choice [19-21].

Results

The results in this study will describe the *change* in biomass yields during the 21st century. Changes are relative to the mean yields of the decade 2001 to 2010 as a representation of the present time.

Mean yield development

The results in this section give the average yield development of all modeled sites. As can be seen in Figure 1, all three varieties visually show a positive yield development throughout the century. This is further underpinned by the actual biomass yields after 2060, where the average yield per decade is always higher than for the reference period. Not as evident is the shared pattern of the decadic coefficient of variability. All three varieties have their lowest value in the present (3% to 4%) with an increase (except for the comparably low variability between 2031 to 2040) towards mid-century (above 8%) and a slight decline towards 6% to 7% at the end of the century. Actual yields will therefore vary more widely around the decadic mean at mid-century.



Apart from these shared aspects there are also obvious differences in the overall development. The following description will thus cover each variety on its own. The *early* variety shows an $R^2 = 0.24$ and an average increase in yields of 0.12% p.a. throughout the century. This trend could be slightly better explained through a polynomial model of second or third order with $R^2 = 0.27$; however, no big advantage would be expected from such an approach. The t/n ratio 1.68 shows no significant trend for $\alpha = 0.95$ but would for $\alpha = 0.9$. Mann-Kendall delivers a more unambiguous result with $p < 0.001$ over the century. It is therefore assumed that a significant trend exists throughout the entire time period.

This trend can basically be split into two parts: the period 2001 to 2050 has an $R^2 = 0.003$ in a linear regression model with an average yield development of $\pm 0\%$ p.a. The period 2051 to 2099 has an $R^2 = 0.11$ with an average yield increase of 0.2% p.a. The lack of a trend in the first half of the century is confirmed by its t/n ratio of 0.5 and $p = 0.39$ for MK. For the period 2001 to 2030, there even seems to appear a slight negative development, with a t/n

ratio of -0.63 and a $p = 0.08$ for MK that is, however, not recognized as being significant.

All in all, it seems clear that a change in biomass yields is expected to happen, however, only after the mid of the century and especially after 2070 when there is only 1 year with a critically lower yield than the present average. In these last 30 years, the yields are about 9% higher than in the first decade, with the last decade being the one with the overall highest yields. If total production of early maize would be calculated over the century, 49.1% would be produced during the first half.

The *medium* variety has an $R^2 = 0.15$ and an average increase in yields of 0.09% p.a. over the century. As with the early variety, a slightly better explanation is provided through a polynomial model with $R^2 = 0.19$. A t/n ratio of 1.34 indicates no linear trend while a $p < 0.001$ for MK assumes a significant trend. These numbers represent the lowest indicator for a trend throughout the century of all varieties.

This is due to a different break within the data that occurs around 2030 and is still present when the year is shifted ± 10 , though weaker. The period 2001 to 2030 shows a linear decline in yields of around -0.2% p.a. and an $R^2 = 0.16$. From 2031 on, this turns towards a positive trend of $+0.13\%$ p.a. and an $R^2 = 0.14$. While the early variety did also show signs for a decline in yields, the data for the medium variety supports it more strongly. While a t/n ratio of -1.3 fails to be significant, the MK with $p = 0.005$ is; therefore, a significant negative trend until 2030 is assumed. On average, this decline will reduce the yields about 5%.

This trend is then reversed towards the end of the century, in such a way that around 2070 the yields are mostly above the present average. However, this happens in a lower magnitude than for the early variety. If only the period 2001 to 2050 is considered, t/n (0.01) and MK ($p = 0.95$) are both highly insignificant, meaning that the average yields are not changing. As this is generally comparable to the early variety, the yield variability is somewhat larger for the medium variety.

The medium variety will thus have the least positive development in the 21st century. Yields after 2070 will on average be 5% above today's. A comparison of both halves of the century has 49.4% of a potential production happening in the first 50 years, again the highest value of all varieties.

The *late* variety is somewhat of an exception. Where early and medium varieties show at least minor comparability, the late variety has a uniquely positive development path. This is evident by just looking at the graph as well as in the numbers of the linear regression model with an $R^2 = 0.65$ and an average yield increase of 0.31% p.a. A change to another regression model does not show any different results. Also the t/n ratio (2.74) and

Mann-Kendall ($p < 0.001$) are more explicit in determining significance than for the other varieties.

However clear, this trend is not entirely constant. While the t/n ratio (2.31) and MK ($p < 0.001$) already show a highly significant trend towards 2050, the data seems to have a break around the year 2030. There appears to be no trend for the period 2001 to 2030 as a t/n ratio of 0.65 and $p = 0.35$ for MK suggest. A linear regression for 2001 to 2030 shows an $R^2 = 0.09$ and a mean yield increase of 0.11% p.a., a non-significant but positive trend, whereas 2031 to 2099 has a $R^2 = 0.37$ and an increase of 0.26% p.a.

The late variety has thus the most positive development throughout the century. The mean yields in the last three decades increase about at least 10% compared to today, with a mean of 25% and a maximum of 36%. The same holds true for a production comparison of both half-centuries, as the first 50 years would only contribute 47.1% to a potential overall production.

Yield development by region

As Figure 2 indicates, there are also certain differences in the regional distribution of potential yield increases or decreases. The late variety does clearly have the most uniform development as it is positive for almost all times and sites. The share of sites with a positive development lies around 53% for the early variety in the period and increases to 87%, 96%, and 95% towards the end of the

century. In a similar fashion, the medium variety starts out at a very low share of 16% positive sites, increasing to 49%, 88%, and 83%.

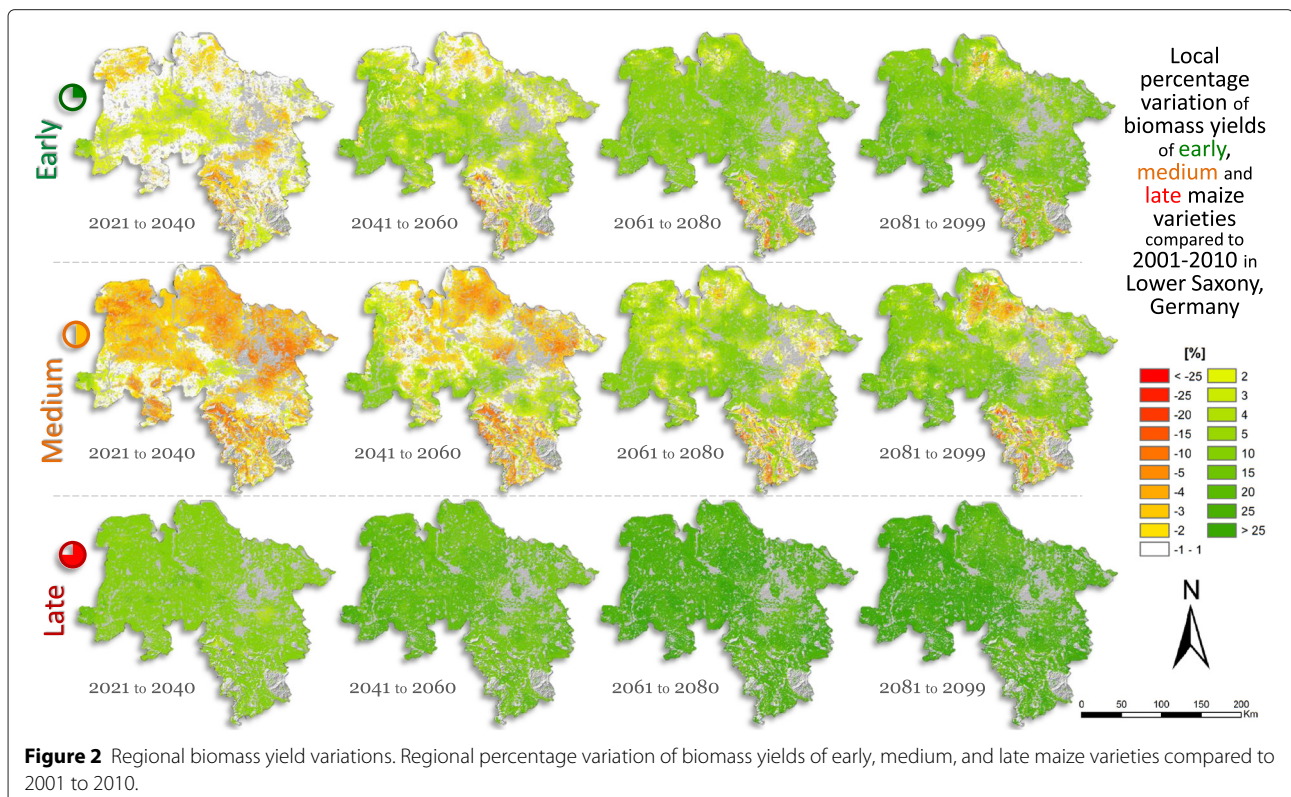
If the coefficient of variation is calculated regarding all sites and years from the respective periods, all three varieties show an increasing cov with progressing time. With 9.3% (2021 to 2040) to 10.7% (2081 to 2099), the late variety does have the least variability. The early (10.4% to 11.5%) and medium variety (10.0% to 11.5%) have a rather similar variation in their yields.

The overall best sites are situated in the west of LS. Two main areas with a below-average yield development can be identified. One is to the north or north-east of LS, the other one to the south. This southern area is, however, not affected uniformly, but rather, quite positive and quite negative sites are alternating. The negative sites are consistently those with an overall shallow profile, situated on the slopes of the hilly landscape. By contrast, the sites with a positive development lie within the fertile river valleys with their good soil quality.

Good soil quality is here defined only through the soil's ability to retain water, basically defined by its field capacity.

Statistical process analysis

To determine the relative influence of certain variables on crop growth, a multivariate linear regression model was



applied with the results shown in Figure 3. On the left side, single parameters are tested against each other for their quantitative and qualitative input strength. For example, a positive correlation of +4 for medium maize and CO₂ indicates that a *rise* in atmospheric CO₂ concentrations by 1 ppm leads to a yield *increase* of 4 g/m². A negative correlation, as for example for summer temperature and medium variety, would, however, stand for a *decline* in yields by roughly 100 g/m² if summer temperatures would *rise* by 1°C.

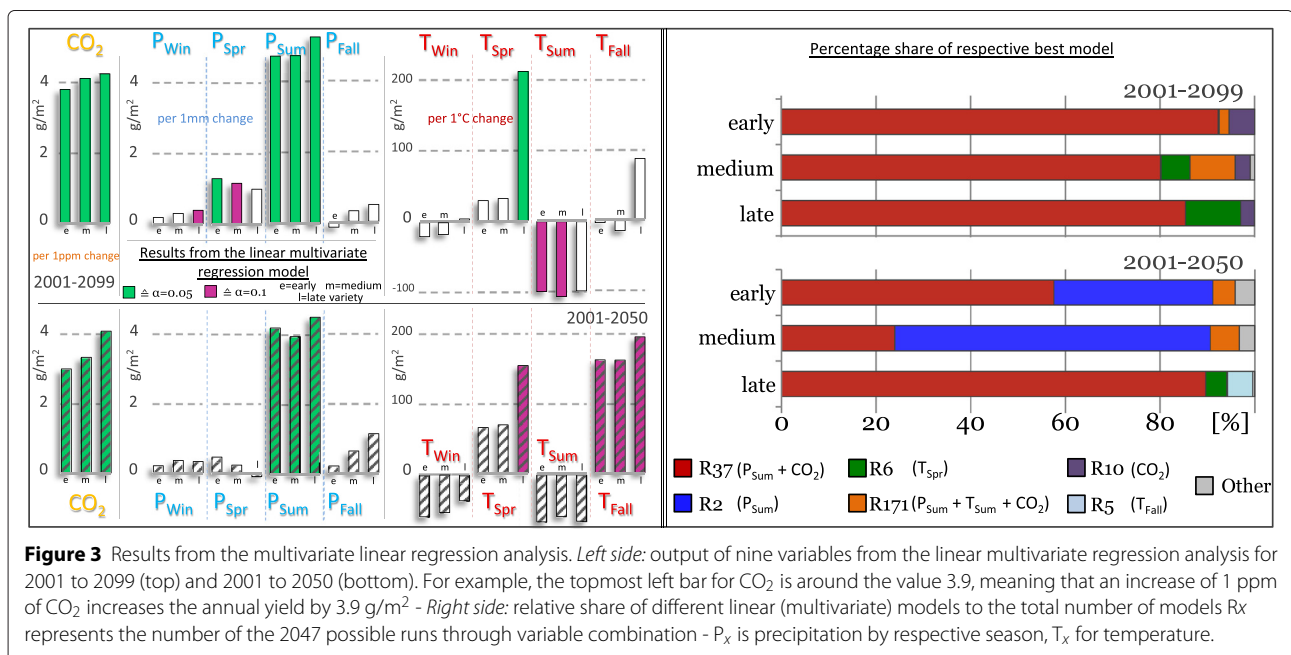
The shown results are the mean output of all sampled sites. Though problems due to some autocorrelation were expected, the linear multivariate models performed quite well. For 2001 to 2099, the mean model *p* value over all sites was <0.001 for all varieties. For the late variety, this holds true not just for the mean but even if all sites are regarded individually. The early and medium varieties did, however, contain around 1,300 (1.5%) sites of less significance, which were, however, still within a margin of 0.01 > *p* > 0.001. The models concerning the first half of the century, 2001 to 2050, show slightly worse results. Though the mean *p* value of all models is still <0.001, the number of models with higher *p* values increased. Even the late variety now did have around 1,500 sites exceeding this threshold, with early and medium variety on about 7,000 sites. Roughly a third of these exceptional sites have *p* values >0.05. In conclusion, the models are slightly better for the description of the long-term development than for the first half of the century.

For 2001 to 2099, two main influence variables are detected. Summer precipitation shows a strong positive correlation for all three varieties. As the amount of rain

is expected to drastically decline throughout the century, this seems to be the main factor to limit future maize yields. On the other hand, atmospheric CO₂ concentrations have a comparable positive correlation and are thus possibly the main agent for a positive yield development. The amount of spring precipitation seems to be of higher importance for medium (*p* = 0.09) and especially early (*p* = 0.04) variety. Both do also show a negative connection with the rising summer temperatures (early *p* = 0.09, medium *p* = 0.08), at least to some degree. The late variety shows basically similar dependencies, however weaker. Instead, spring temperatures (*p* < 0.01) seem to be of much higher importance than for the other two varieties.

For 2001 to 2050, these indicators change only slightly. Still, summer precipitation and CO₂ concentrations remain the determining variables (*p* < 0.001). The late variety still shows some dependency towards spring temperatures (*p* = 0.09). For all three varieties, fall temperatures seem to be of higher importance in the first 50 years (0.1 > *p* > 0.05), whereas summer temperatures and spring precipitation have no apparent influence.

That these multivariate models are not entirely perfect becomes evident when, for example, winter precipitation and late maize are considered for 2001 to 2099. While not being *highly* significant, a certain connection between both variables is suggested. However, as winter months include December, January, and February, when no maize is grown, this also seems to be highly improbable. While the statistical model was believed to be reasonably good in determining the relative influence of each variable, there was a need to exclude variables that are not necessarily important.



Therefore, the next step was to identify the one linear multivariate regression model for each site that best describes its yield development, as shown on the right side in Figure 3. These results were largely in accordance with the results from the models with 11 input variables. Models in the following approach are numbered from R1 to R2047. R is here short for *Run* while the number indicates the variable combination. Higher numbers relate to more input variables. The relevant numbers are explained further in Figure 3.

For 2001 to 2099, the model best describing the yield development of all varieties was one containing only summer precipitation and CO₂ concentrations (R37); 92% of the early variety, 80% of the medium variety, and 85% of the late variety sites had this as the optimal model. The remaining sites of the early variety were best described by a model *only* containing CO₂ concentrations (R10). The same is partially true for the late variety, as 3% of the models show their best results when only including CO₂ (R10); however, models that only used spring temperatures (R6) accounted for the remaining 12%. This connection to spring temperatures was also identified in the models featuring all variables. The two runs R6 and R10 have a combined share of about 10% of the medium variety's remaining sites, while the other remaining 10% are a combination of summer precipitation, summer temperatures, and CO₂ concentration (R171).

For the period 2001 to 2050, the varieties did show a more differentiated picture. The late variety did still have R37 as the dominant model on 90% of its sites, while 5% were made up of R6 and another 5% of other not-further-distinguished models. The early variety had R37 on just 58% of its sites, 5% showing R171, and almost the entire rest of 34% from R2 with summer precipitation only. The medium variety had only 24% comprising of R37, 6% of R171, and a dominating 66% of R2.

Discussion

It should be noted that this study, like all other modeling approaches, is limited by the boundaries each model brings with itself. This study's results should thus be read as probable pathways if climatic variables do change as depicted. The focus lies on the question how different maize varieties will behave if input variables are altered within one probable future scenario.

While variations between climate models are well discussed and described, also for the climate model used in this study [22], Bassu et al. [23] took to crop models to estimate modeling spreads of maize yields between 23 crop models. In conclusion, they deemed the use of multi-model averages as being of merit as single results diverged markedly. Thus, it would be of interest to validate the results of this study by the use of different climate and crop models or their ensembles. As the selected approach

of this study is relatively time and resource consuming due to the large number of study sites, no alternative runs with other models have been conducted yet.

However, this study focuses on the differences of three varieties, a point that other studies often neglect [8] and that is not feasible with all crop models. If only studies that account for different varieties are regarded, the results from this study basically agree with the findings of, for example, Southworth et al. [17] in that the choice of variety will have a critical effect on how maize yields will develop under a future climate. It even agrees to the point that late varieties will show the most positive development which can be quite substantial with >25% in Lower Saxony towards the end of the century.

One reason for this beneficial development of late maize is clearly the fact that today's temperature sums in LS are not suitable for a full completion of its growing cycle. Temperature sums from 20th April to 15th October (minus 6°C temperature basis) vary today around 1,500°C in LS and are therefore perfect for medium varieties but below optimum for late varieties. It seems that around 2030, when temperature sums have increased by about 100°C, the late variety can fully benefit from these temperatures. That the late variety disproportionately benefits from the generally rising temperatures is further supported by statistical analysis, as the late variety is the only one to show a substantial positive correlation to rising spring temperatures.

The future climatic conditions are, however, not entirely beneficial for the growth of late maize varieties. The main limiting factor, for all varieties, is the decline in summer precipitation. However, the time spent within these dry months in relation to the total growing time is shorter for the late variety as, for example, the medium one. Thus, the late variety can use the moister spring or fall conditions for a successful growth. Similarly, the early variety profits from the spring conditions while the medium variety would need more water during the summer months of which August will be the driest.

An adaption of sowing date could mitigate these negative effects to some degree. Some testing on single sites, however, suggests that the general yield development series of *late* > *early* > *medium* variety is not changed, though the absolute difference might. The influence of the sowing date on the results of this work are currently under evaluation.

In a related matter, critical development stages of maize, e.g., during flowering, where water shortage disproportionately restrains plant growth [24], were not sufficiently implemented in the used version of the crop model. This has changed in the current version and is under evaluation as well. While a shift in sowing dates is expected to be generally beneficial for maize yields, this increase in sensitivity is believed to have a rather detrimental effect.

While increasing temperatures are generally good for the late variety, temperatures during the growing season should not exceed optimum growing temperatures of 25°C to 30°C over longer time periods, as this would inhibit photosynthesis rates [25]. However, heat days will increase in LS throughout the century. The effects of this are visible in the multivariate regression models with an increasing negative impact of summer temperatures on yields.

In reality, this effect is expected to be even worse. The main reason is the use of a relatively smooth time series. This is firstly caused by the statistical nature of the climate model. The usage of mean values from ten climate model runs tends to eliminate extreme values. Secondly, the results of this downscaled climate data-set were 10-day values that were further combined into monthly averages. Temperature peaks were thus eliminated within the monthly means. The same is true for the monthly values of precipitation, as BioSTAR simply assumes that the monthly value is distributed evenly over each day of the month. This is clearly not the case in nature where a steady flow of water would be optimal for the plants' water supply. It will make some difference if 20 mm precipitates in 1 day followed by 9 dry days or if 2 mm for each of the 10 days is assumed. While a shortage in precipitation might be worse than elevated temperatures, it can be mitigated relatively easily by irrigation while the latter can hardly be opposed. As some areas in LS are already today under irrigation, it would be interesting to estimate probable changes in irrigation practices, meaning an estimation of the amount of water needed for optimal growth and taking the actually available amount of water into account.

That even relatively smooth precipitation series lead to varying yields becomes evident when the observed decadal variability of the yields is compared with the variability of precipitation. More precisely, the yields have their greatest variability in the decade 2051 to 2060, when summer precipitation has the greatest variability too. The same link can be found in the decade 2021 to 2030 but not for 2031 to 2050, as both decades have either high-yield or high-precipitation variability but not both. The underlying cause for the change in yield variability therefore seems to be more complex than a single dependency on summer precipitation but might well be a result of the models used.

All in all, the outlook for maize yields in LS can be described as good, especially considering that the choice of breed or variety can be quite beneficial. If absolute yields are considered today, the three varieties stand in a relation of 0.93:1:1.10 (early:medium:late, medium = 1) within the model if averaged over all modeled sites in LS. In the second half of the century, this will have shifted to a ratio 0.96:1:1.28, but can be as high as 0.96:1:1.37 for single years. The generally higher yields of the late variety

in combination with its all-out positive yield development will make it the number one choice for maize in the future.

Though this is generally positive, there exist some climatic circumstances that might negatively affect yield development that were not accounted for in this study. One is tropospheric ozone, as 30 ppb are sufficient to induce ozone intoxication in plants [26]. Since 1950, the concentration of tropospheric ozone has nearly doubled. Studies suggest that maize yields might be 2% to 5.5% higher today if this rise would not have happened [27]. It is, however, debatable if tropospheric ozone concentrations will further increase, at least in Europe, due to anthropogenic emission as CMIP 5 runs suggest [28].

A greater potential risk arises through common or invasive pests. Complicated interactions and feedbacks between climate, crop, and pests make concise predictions difficult [29]. However, as Fröhlich [13] points out, there is no expectation at all that the climatic change will lead to a reduction in infestation of any pest. In how far new cropping techniques or breeds will be able to counteract such problems is beyond the scope of this study.

Following the list of potentially negative effects of a climatic change, it seems almost surprising that the results from this study suggest quite the contrary: rising yields towards the century's end. The only variable contributing significantly towards rising yields is atmospheric CO₂; therefore, its actual future concentration will be crucial for maize yields.

Maize as a C₄ crop is not expected to profit from rising CO₂ through an elevated photosynthesis rate [30]. However, an increased water use efficiency is expected in C₃ as well as C₄ plants. This effect is accounted for by the crop model, resulting in a relatively linear decrease in the amount of water that is needed to produce the same amount of plant matter. The reduction is comparable for all three varieties and ranges between 25% to 30%.

In an environment where water is getting increasingly scarce, this is a desirable development. It appears that the negative impacts of summer temperature and precipitation are stronger until mid-century, especially for medium or early variety. The positive influence of CO₂ steadily increases to a point where the positive effects prevail and yields are rising.

That water saving through increased CO₂ concentrations can have such a strong effect is also pointed out by Taube and Herrmann [10], where grasslands profit from a rise even under increasing drought stress during summer months. This would be in line with Morgan et al. [31] who are emphasizing the importance of water saving through increased CO₂ in contrast to a direct fertilization effect.

CO₂ might still not be solely responsible for the rising yields. It undoubtedly plays a major role in doing so;

however, other factors that have not been included in the process evaluation might contribute as well. Mera et al. [32] included the effect of solar radiation in their research and found a non-linear contribution to yield development, however, not as prominent as changes in precipitation or water availability.

Conclusions

As could be shown, the changing climate will have a predominantly positive effect on the yield development of maize and its varieties in Lower Saxony. A stronger positive development is, however, not expected to set in before the second half of the 21st century.

The first half will be stagnant in yields for the early variety. In the last decades of the century, the yields will on average increase about 9%. The medium variety even shows a negative development in the first half that is later reversed. Towards the century's end, the yields then increase about 5% in comparison to today's yields. The late variety has the all-out best yield development, with an average increase of 25% for 2071 to 2099 and a strong positive trend beginning already around 2030. In addition to this above-average rise, the yields themselves are higher so that a transition of local agricultural practices towards the late variety is conceivable. The yield development of all yields is accompanied by an increase in yield variability during mid-century that seems to partially follow precipitation patterns.

Thus, the development will generally be positive in the long run, though the path for each variety diverges. As the varieties react in different ways to the changing annual pattern of temperature and precipitation, the results do indicate that the consideration of different varieties might also change the outcome of studies at different study sites. At any rate, the few other existing studies are hinting towards the same result [17,18]. Varieties with longer or shorter growing periods will have an advantage in areas where medium varieties are predominantly grown today.

Besides, for Lower Saxony or Germany in general, a decline in summer precipitation is not seen as an insurmountable obstacle for local agriculture, as there is no necessity for irrigation on most sites today and present water reserves would allow an expansion of irrigated areas at least to some degree. Intensive groundwater management will be a basis for this, as increasing winter precipitation could cover the water extraction during the summer months. New breeds and cropping techniques will also aid to further counteract the more negative effects of climate change, including the expansion of pests or hitherto unknown effects that might arise.

In conclusion, the maize yields in Lower Saxony will not suffer from long-lasting declines but will have a generally positive outlook over the course of the 21st century.

Methods

The basic approach used in this study was to use high-resolution climate data in combination with detailed soil information as the input for a crop model. All components involved are introduced in the following sections.

Area of interest: Lower Saxony

LS, with roughly 46,500 km² of land area, is the second largest of the 16 federal states of Germany, providing around 15% of the nations agricultural land [2]. Located to the north-west of Germany (Figure 4), the state lies in a transition zone between a more maritime (NW) towards a more continental climate (SE) [33] with an average annual temperature of around 9°C and a mean precipitation of 749 mm in the period of 1971 to 2000 [34].

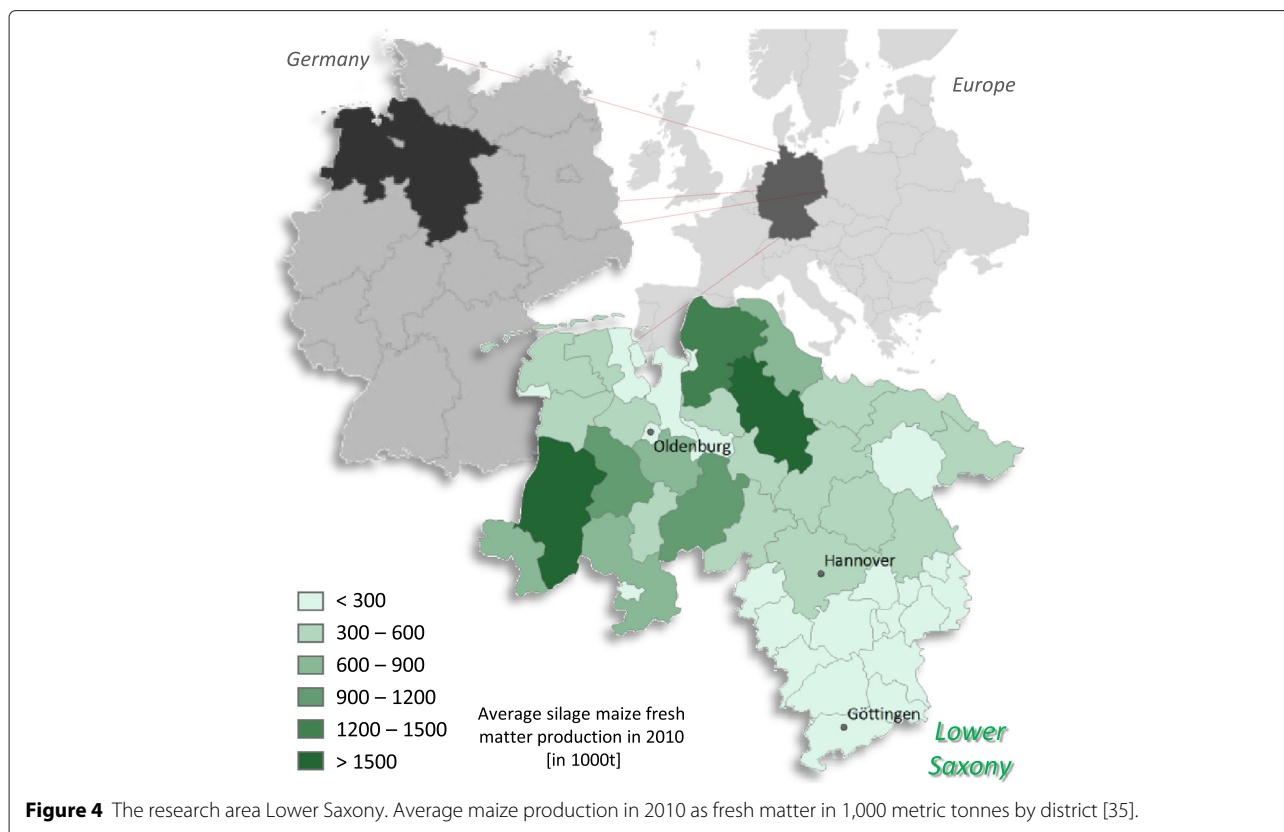
Principally, LS consists of three distinguishable landscape structures: the coast, including the East Frisian Islands, the German North-Western Lowland (amounting for three quarters of LS' total land area) as well as a low-mountain range to its south, with the Harz as its most prominent representative [36]. The broad loess valleys to the south and especially the fertile "Börde" that fronts the low-mountain range to the north are the main cultivation areas for high-demand crops like winter wheat. The Lowland mainly consists of "Geest" land, Quaternary sediments that are particularly sandy to the north-east, with precipitation as low as 500 mm, making irrigation already necessary today on several sites. The west of LS is dominated by livestock farming with the coastal area predominantly used for grassland farming as high ground water levels prevent intensive use [37].

The regional differences manifest themselves in the average regional yields. In the period of 2003 to 2008, the average winter wheat yield south of Hanover was always above 8 t/ha, above 7 t/ha south of Oldenburg and generally below 7 t/ha in the north-east. Maize yields behave rather similarly, with dry maize silage (33% dry matter content) having the best yields to the south. The margin between the different parts of LS is, however, smaller for maize than for wheat and varies generally around 15 t/ha. As can be seen in Figure 4, the areas with the largest maize production coincide with areas where only little wheat is grown and where feed for livestock is in high demand.

The crop model

The crop model used in this study is a relatively new model called *BioSTAR*, developed at the Georg-August-University in Göttingen [38]. The model uses a CO₂-based crop development engine, thus taking a potential CO₂ fertilization effect into account.

The basic working principle uses temperature to determine the plants' development stages and a combination of temperature, solar radiation, and CO₂ concentration for the maximum photosynthesis rate. Both incrementally



build the plants’ maximum possible biomass that is then recursively limited by precipitation, i.e., the soil water content. The model is suitable for large-scale as well as parcel size yield assessments. The philosophy behind it is an easy to use model with a robust output and a manageable amount of required input parameters.

The model was validated on sample sites in Lower Saxony with a general disagreement between actual and modeled yield of around 10%. The required climatic input variables are precipitation, temperature, atmospheric CO₂ concentration, solar radiation, relative air humidity, and wind-speed at 2-m altitude. In addition, information on the soil type is required. As the model was initially conceived as a tool for the estimation of bio-energy potentials, the maize crops only contain silage maize (no food maize). Furthermore, the three varieties do not consist of single breeds but represent an average of several early, medium, or late breeds. The breeds are already grown in Germany, though the late variety not yet in Lower Saxony due to temperature limitations. Breeds with a very high temperature demand, as grown today under a Mediterranean climate, are not included.

As a rather robust approach, the model leaves out some aspects that might well be of importance for a future yield development. Results in this study should thus be read as what would happen if nothing but the climatic input

variables would change. These neglected aspects include any technological advances, including any changes in farm management. Irrigation was not included in the modeling, whether for current or future yields, even if there do exist some areas today that are under irrigation. The sowing date was always the 115th day of the year and was not changed throughout the century. No extra fertilization was included and soil water content expected to be at 100% at the beginning of the growing season. No effects of a prior crop on a specific site are taken into account. The model either stopped on day 300 of a given year or when full maturity was attained, depending on what happened first.

At the time of the actual modeling, the BioSTAR model was still under active development. However, all crops had already been validated. This validation on sites in Lower Saxony was one reason for the choice of BioSTAR. The others are its applicability on a large number of sites and a differentiation of the three varieties.

Soil data

The soil data used in this study is part of the official digital soil survey map of LS in a resolution of 1:50,000, called BÜK50 [39]. This map was intersected with data from the CORINE land-use classification of 2005 for Lower Saxony to extract sites that are used for agricultural purposes only.

The result between the intersected soil and land-use map was a data-set of 91,014 sites with each used as a unique modeling area. The soil map contained codified information on the soil type and its thickness that were translated into the format required by BioSTAR. Fifteen 10-cm soil levels had to be identified, each containing the information on prevalent soil type with a 16th level representing everything below the initial 1.5 m. The crop model uses these information solely for the calculation of soil water content and flows.

Climate model and data

The climate data was derived from the regional climate model WETTREG, a German portmanteau word translating into “weather condition based regional model”. The model uses a statistical downscaling method where large-scale atmospheric patterns are brought into a statistical relationship with local climate station data [40]. The initial link is created by using known measured data at these stations and globally gridded reanalysis data, with both ERA40 and NCEP/NCAR data using a k-means cluster approach. This link is then reestablished through GCM-derived gridded data, here from the ECHAM5 global climate model. For each large-scale weather pattern of the future, a pool of local station data is available that is then resampled several times to create the climate signal [41].

The actual climate model's name is WETTREG 2010, as the initial approach (today called WETTREG 2006) neglected weather patterns that are relatively rare today but will increasingly emerge in a future climate. Thus, two patterns were added to this latest version, significantly reducing the model bias in comparison to other climate models [42]. WETTREG 2010 was applied at 248 stations distributed throughout LS, whereas the mean of ten iterations at each station was used as the climate signal for the 21st century (A1B SRES scenario). Using spatial interpolation methodology, these point-based information were further upscaled to a grid of 100×100 m at the *Jülich Research Centre* through the *CLINT interpolation model* [43]. This resulted in a grid of 11,520,000 data points for each time step (with 10-day values amounting to 36 single steps per year) for temperature, precipitation, and potential evapotranspiration. The data was available for the years 1961 to 2100 with an additional data-set of interpolated measured station data from Germany's National Meteorological Service (DWD) for the years 1961 to 2005 for validation purposes. Both data-sets agreed reasonably well in temperature and precipitation (with WETTREG2010 showing a mean annual average bias of $+0.02^\circ\text{C}$ and -2.24% precipitation).

It should, however, be noted that this high-resolution downscaling cannot and does not improve the confidence of the initial climate projection. The main purpose of this downscaling is to capture regional differences within the

projected climatic change proposed by the ECHAM 5 GCM and the A1B scenario.

Furthermore, data on global radiation was taken from a run of ECHAM5 in a global T31 grid of 48×96 that was calculated within the scope of the ENSEMBLES project [44]. The ECHAM5 data was chosen for the purpose of data consistency as the WETTREG2010 data did also employ ECHAM5 runs for the boundary conditions. The data-set was provided for the years 2001 until 2099, thus setting the limits for this study's timeframe. Global radiation was calculated as the sum of *surface net downward shortwave flux* and *surface net downward longwave flux*.

Wind speed was taken from official maps of LS of 2005 provided through the State Authority for Mining, Energy and Geology (LBEG) that uses the FAO approach for wind speed in a height of 2 m above grass. Typical wind speed ranges from 5 to 6 m/s at the coast to around 1 to 2 m/s in the south of LS. To present knowledge, no significant change in the wind speed pattern is anticipated for the future [45]; hence, the data was applied without further changes.

Relative air humidity was calculated backwards from the WETTREG2010 data on evapotranspiration, as this was derived through the Penman-Monteith approach.

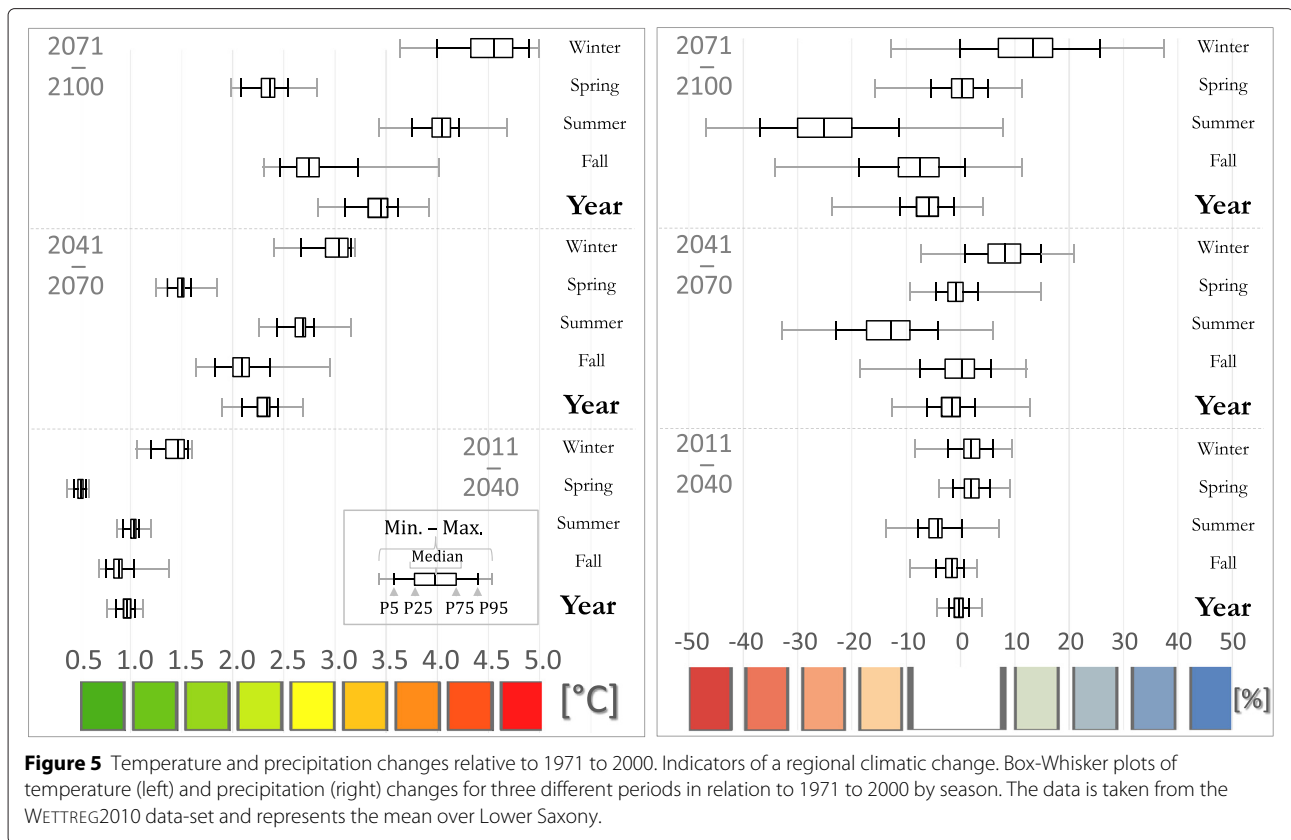
All data was then intersected with the soil sites using the respective variable's mean value.

Climate change in Lower Saxony

Figure 5 gives a brief description of the average change of the climatic variables' temperature and precipitation in LS. The climatic comparison is done by 30-year intervals where 1971 to 2000 is used as present-day climate that might be seen as more current than the climatic normal period of 1961 to 1990 [46]. These intervals represent a near- (2011 to 2040), middle- (2041 to 2070), and long-term (2071 to 2100) climatic development.

There are no areas at any time that do show a stagnant or even decreasing temperature development. However, warming in spring is always below the annual average while the winter months are always above. Fall temperatures are slightly below annual average and summer months above, though both deviate less from the mean than spring and winter seasons do. The mean temperature increase is 0.95°C for near-, 2.30°C for middle-, and 3.40°C for long-term scenarios. The development is relatively uniform throughout LS with a slightly stronger (but still less than 0.5°C difference) development to the south-east.

The precipitation development is different in terms of being positive or negative depending on time and space. If only annual means are considered, almost no change in precipitation can be detected, although a moderate decline is visible. It, however, becomes increasingly obvious that the winter and summer seasons are drifting into



opposite directions. While in the near future all seasonal differences remain in a window of more or less $\pm 10\%$, these changes drastically amplify towards the end. The mean decline in precipitation is around -25% in the long-term perspective with some areas at a nearly -50% decrease. Winter increases are also substantial, but at around 15% towards the end of the century, they cannot fully counterbalance the summer losses.

In summary, all deviations from today's values will increase with passing time, fostering a local development towards a more winter rain climate that features increasingly hot and dry summers and mild wet winters.

Statistics

To account for extreme or unrealistic outliers, a two-way approach was devised for the original resulting data-set. At first, all sites with a biomass yield of 0 g/m^2 were excluded. This typically amounted to 706 sites that contain only bedrock in their soil levels. In a second step, all data below the 0.1 and above the 99.9 percentile were excluded, as values close to zero or unreasonably large yields were present. This proved to well eliminate outliers while preserving as much data as possible.

Basic statistics in this study include standard deviation, coefficient of variability (cov), linear regression models, and the coefficient of determination [47]. The time series

could well be described using linear regression models; however, tests with exponential, logarithmic, and second- and third-order polynomial and potential models did show about equal results.

The data was further explicitly tested for trends using a robust trend/noise (t/n) ratio, where the difference in yield from the years 2099 and 2001 was divided through the time series' standard deviation. A significant trend is assumed at a ratio of 1.96 or above, representing the $\alpha = 0.05$ level. As this test is often considered to be relatively weak, the non-parametric Mann-Kendall (MK) test was applied as well. A further advantage of MK is its ability to detect non-linear trends. Most statistics were applied for the time series of 2001 to 2030, 2001 to 2050, and 2001 to 2099.

Data comparing the first (2001 to 2050) and second (2051 to 2099) half of the century will sometimes give a ratio of 1st/2nd half. As the second half is here only 49 years long, only a ratio of 0.505 would mean that the value is equal for both halves.

To determine the climatic variables that significantly influence the yield development throughout the century, a multivariate regression model was used. In a first step, 11 variables were included in the model that was then run for all sites. These variables include, respectively, five temperature and precipitation values (annual, winter, spring,

summer, fall mean) as well as atmospheric CO₂ concentration. This was done to get a general test of strength of all variables against each other at different sites. However, autocorrelation is very likely to occur, as at least temperature trends seem to be relatively equal across the five variables. Therefore, a best model approach was devised. Eleven variables can be assembled into 2,047 unique groups when their order is neglected. Each combination was treated as a new model and calculated on 3,740 randomly distributed sites. The multivariate model that explained the yield development best was then logged. If combinations gave equally good results, the first run, generally the one with less variables, was logged. This was done for the years 2001 to 2009 as well as 2001 to 2050 to identify possible changes in variable impact.

The statistics in this study have been calculated using *MS Excel 2010* and *Python* (v2.7) with the addition of *SCIPY* and *NUMPY* [48], *Pandas* [49], and *MATPLOTLIB* [50]. The calculation of the multivariate regression models was done using *R* (v2.15.2) and *rpy2* (v2.3.0).

Abbreviations

LS: Lower Saxony, state in Germany; MK: Mann-Kendall test for trends; P_x: Precipitation sums of x (win = winter, spr = spring, sum = summer, fal = fall); R_x: Run-number of all possible variable combinations for a multivariate regression model; T_x: Temperature means of x (win = winter, spr = spring, sum = summer, fal = fall).

Competing interests

The authors declare that they have no competing interests.

Authors' contributions

JFD carried out the data analysis, graphical design and first draft of the study. MK took part in conceiving the study and participated in its design and coordination. Both authors contributed on specific aspects, read and approved the final manuscript.

Acknowledgements

We acknowledge support by the Open Access Publication Funds of the Göttingen University. We would like to thank the LBEG in Hannover for the provision of the climate data-set.

Received: 2 December 2014 Accepted: 22 April 2015

Published online: 12 May 2015

References

1. FAO. FAO online statistical database, Rome. 04.02.2014. 2014. <http://faostat3.fao.org>.
2. DeStatis. Statistical Yearbook of Germany 2013, 1st edn. Wiesbaden: Statistisches Bundesamt; 2013.
3. LWK. Homepage of the Chamber of Agriculture of Lower Saxony: homepage of the Chamber of Agriculture of Lower Saxony, Oldenburg. (10.03.2014). 2014. <http://www.lwk-niedersachsen.de>.
4. Hoehner G. Entwicklung Energiepflanzenanbau und Biogas in Niedersachsen, Berlin. (17.07.2013). 2007. www.ifeu.org/landwirtschaft/pdf/6_Hoehner_Maisanbau_Nieders.pdf.
5. NMEVL. Maisanbau: Mehr Vielfalt durch Alternativen und Blühstreifen. Hannover; 2012. <http://www.ml.niedersachsen.de/download/78012>.
6. LWK. Energiepflanzenfeldtage: Es muss nicht immer Mais sein, Oldenburg. (10.03.2014). 2014. <http://www.lwk-niedersachsen.de/index.cfm/portal/2/nav/74/article/15172.html>.
7. Wolf J, Diepen CA. Effects of climate change on grain maize yield potential in the European Community. *Climatic Change*. 1995;29(3):299–331.
8. Supit I, van Diepen CA, Wit AJWd, Wolf J, Kabat P, Baruth B, et al. Assessing climate change effects on European crop yields using the Crop Growth Monitoring System and a weather generator. *Agric Forest Meteorology*. 2012;164:96–111.
9. Meyer U, Hüther L, Manderscheid R, Weigel H-J, Lohöller M, Schenderlein A. Nutritional value of maize 2050 In: Schwarz FJ, editor. Optimierung des Futterwertes Von Mais und Maisprodukten. Landbauforschung/Sonderheft. Braunschweig: VTI; 2009. p. 107–14.
10. Taube F, Herrmann A. Relative benefit of maize and grass under conditions of climatic change In: Schwarz FJ, editor. Optimierung des Futterwertes Von Mais und Maisprodukten. Landbauforschung/Sonderheft. Braunschweig: VTI; 2009. p. 115–26.
11. Jacob D, Göttel H, Kotlarski S, Lorenz P, Sieck K. Klimaauswirkungen und Anpassung in Deutschland: Phase 1: Erstellung regionaler Klimaszenarien für Deutschland: Im Auftrag des Umweltbundesamtes, Dessau-Roßlau. Umweltbundesamt, Dessau-Roßlau, Climate Change (11/2008). 2008.
12. USF. Klimawandel und Landwirtschaft in Hessen: Mögliche Auswirkungen des Klimawandels auf landwirtschaftliche Erträge. INKLIM Baustein 2: Universität Kassel; 2005.
13. Fröhlich M. Klimawandel und Landwirtschaft: Auswirkungen der globalen Erwärmung auf die Entwicklung der Pflanzenproduktion in Nordrhein-Westfalen, Köln. Umwelt Landwirtschaft Natur- und Verbraucherschutz Landes Nordrhein-Westfalen: Des Ministerium für Klimaschutz; 2010.
14. Mirschel W, Wenkel K-O, Wieland R, Köstner B, Albert E, Luzi K. Auswirkungen des Klimawandels auf die Ertragsleistung ausgewählter landwirtschaftlicher Fruchtarten im Freistaat Sachsen, Münchenberg. Münchenberg: ZALF; 2008.
15. Mirschel W, Wieland R, Wenkel K-O, Guddat C, Michel H, Luzi K, et al. Regionaldifferenzierte Abschätzung der Auswirkungen des Klimawandels auf die Erträge von wichtigen Fruchtarten im Freistaat Thüringen mittels Ertragssimulation mit YIELDSTAT, Münchenberg. Münchenberg: ZALF; 2012.
16. Buttler CV, Karpenstein-Machan M, Bauböck R. Klimafolgenmanagement Durch Klimaangepasste Anbaukonzepte Für Energiepflanzen in der Metropolregion Hannover-Braunschweig-Göttingen-Hildesheim. Stuttgart: Ibidem; 2013.
17. Southworth J, Randolph JC, Habeck M, Doering OC, Pfeifer RA, Rao DG, et al. Consequences of future climate change and changing climate variability on maize yields in the midwestern United States. *Agric Ecosystems Environ*. 2000;82(1-3):139–58.
18. Liu Z, Hubbard KG, Lin X, Yang X. Negative effects of climate warming on maize yield are reversed by the changing of sowing date and cultivar selection in Northeast China. *Global Change Biol*. 2013;19(19):3481–92.
19. Wolf J, van Diepen C. Effects of climate change on silage maize production potential in the European Community. *Agric Forest Meteorology*. 1994;71(1-2):33–60.
20. Kwabiah AB. Growth and yield of sweet corn (*Zea mays* L.) cultivars in response to planting date and plastic mulch in a short-season environment. *Scientia Horticulturae*. 2004;102(2):147–66.
21. Meza FJ, Silva D, Vigil H. Climate change impacts on irrigated maize in Mediterranean climates: evaluation of double cropping as an emerging adaptation alternative. *Agric Syst*. 2008;98(1):21–30.
22. Kreienkamp F, Baumgart S, Spekat A, Enke W. Climate signals on the regional scale derived with a statistical method: relevance of the driving model's resolution. *Atmosphere*. 2011;2(2):129–45.
23. Bassu S, Brisson N, Durand J-L, Boote K, Lizaso J, Jones JW, et al. How do various maize crop models vary in their responses to climate change factors? *Global Change Biol*. 2014;20(7):2301–20.
24. Ehlers W. Wasser in Boden und Pflanze: Dynamik des Wasserhaushalts Als Grundlage Von Pflanzenwachstum und Ertrag. Stuttgart (Hohenheim): Ulmer (Eugen); 1996.
25. Endlicher W, (ed). 2007. Der Klimawandel: Einblicke, Rückblicke Und Ausblicke. Potsdam: Potsdam-Inst. für Klimafolgenforschung.
26. Long SP, Ainsworth EA, Leakey ADB, Nösberger J, Ort DR. Food for thought: lower-than-expected crop yield stimulation with rising CO₂ concentrations. *Science*. 2006;312(5782):1918–21.
27. Avnery S, Mauzerall DL, Liu J, Horowitz LW. Global crop yield reductions due to surface ozone exposure: 1. Year 2000 crop production losses and economic damage. *Atmos Environ*. 2011;45(13):2284–96.
28. Fiore AM, Naik V, Spracklen DV, Steiner A, Unger N, Prather M, et al. Global air quality and climate. *Chem Soc Rev*. 2012;41(19):6663–83.

29. Schaller M, Weigel HJ. Analyse des Sachstands zu Auswirkungen von Klimaveränderungen auf die deutsche Landwirtschaft und Maßnahmen zur Anpassung, Braunschweig: FAL Agricultural Research, Sonderheft 316; 2007.
30. Lambers H, Pons TL, Chapin FS. *Plant physiological ecology*, 2edn. New York: Springer; 2008.
31. Morgan JA, Pataki DE, Körner C, Clark H, Del Grosso SJ, Grünzweig JM, et al. Water relations in grassland and desert ecosystems exposed to elevated atmospheric CO₂. *Oecologia*. 2004;140(1):11–25.
32. Mera R, Niyogi D, Buol G, Wilkerson G, Semazzi F. Potential individual versus simultaneous climate change effects on soybean (C3) and maize (C4) crops: an agrotechnology model based study. *Global Planet Change*. 2006;54(1-2):163–82.
33. Seedorf HH, Meyer H-H. *Historische Grundlagen und Naturräumliche Ausstattung*. Neumünster: Wachholtz; 1992.
34. DWD. Website of the German Weather Service. 24.03.2014. 2014. <http://www.dwd.de>.
35. LSN. Statistical data of the Statistical Office of Lower Saxony, Hannover. (14.03.2014). 2014. <http://www.nls.niedersachsen.de/>.
36. Drachenfels OV. Überarbeitung der Naturräumlichen Regionen Niedersachsens. Informationsdienst Naturschutz Niedersachsen. 2010;30(4):249–52. (17.07.2013).
37. Heunisch C, Caspers G, Elbracht J, Langer A, Röhlings H-G, Schwarz C, et al. *Erdgeschichte von Niedersachsen: Geologie und Landschaftsentwicklung*, Hannover. Landesamt für Bergbau, Energie und Geologie (LBEG), Hannover, Geoberichte. 2007;(6).
38. Bauböck R. GIS-gestützte Modellierung und Analyse von Agrar-Biomasspotentialen in Niedersachsen – Einführung in das Pflanzenmodell BioSTAR. Göttingen: PhD thesis, Georg-August-Universität. 2013.
39. Boess J, Gehrt E, Müller U, Ostmann U, Sbresny J, Steininger A. Erläuterungsheft zur Digitalen Nutzungsdifferenzierten Bodenkundlichen Übersichtskarte 1:50.000 (BÜK50n) von Niedersachsen, vol. 3. Hannover: Arbeitshefte Boden; 2004.
40. Enke W, Spekat A. Downscaling climate model outputs into local and regional weather elements by classification and regression. *Climate Res*. 1997;8:195–207.
41. Enke W, Deutschlander T, Schneider F, Kuchler W. Results of five regional climate studies applying a weather pattern based downscaling method to ECHAM4 climate simulation. *Meteorologische Zeitschrift*. 2005;14(2):247–57.
42. Kreienkamp F, Spekat A, Enke W. Weiterentwicklung von WETTREG bezüglich neuartiger Wetterlagen. Climate & Environment Consulting Potsdam GmbH. 2010.
43. Müller U, Engel N, Heidt L, Schäfer W, Kunkel R, Wendland F, et al. *Klimawandel und Bodenwasserhaushalt*, Hannover. Landesamt für Bergbau, Energie und Geologie (LBEG), Hannover, Geoberichte. 2012;(20).
44. Roeckner E. ENSEMBLES STREAM2 ECHAM5C-MPI-OM SRA1B run1: World Data Center for Climate: CERA-DB ENSEMBLES2_MPEH5C_SRA1B_1_MM. (17.07.2013). 2009. http://cera-www.dkrz.de/WDCC/ui/Compact.jsp?acronym=ENSEMBLES2_MPEH5C_SRA1B_1_MM.
45. NMUEK. Empfehlung für eine niedersächsische Klimaangepasstungsstrategie. 01.08.2013. 2012. <http://www.umwelt.niedersachsen.de/klimaschutz/aktuelles/107128.html>.
46. WMO. Homepage der WMO: working together in weather, climate and water. 21.06.2011. 2011. <http://www.wmo.int>.
47. Schönwiese C-D. *Praktische Statistik Für Meteorologen und Geowissenschaftler*, 4edn. Berlin [u.a.]: Borntraeger; 2006.
48. Jones E, Oliphant T, Peterson, Pearu, et al. *SciPy: open source scientific tools for Python*. (17.07.2013). 2001–. <http://www.scipy.org/>.
49. Pandas. pandas: Python Data Analysis Library. (17.07.2013). 2012. <http://pandas.pydata.org/>.
50. Hunter JD. Matplotlib: A 2D graphics environment. *Comput Sci Eng*. 2007;9(3):90–5.

Submit your manuscript to a SpringerOpen[®] journal and benefit from:

- Convenient online submission
- Rigorous peer review
- Immediate publication on acceptance
- Open access: articles freely available online
- High visibility within the field
- Retaining the copyright to your article

Submit your next manuscript at ► springeropen.com