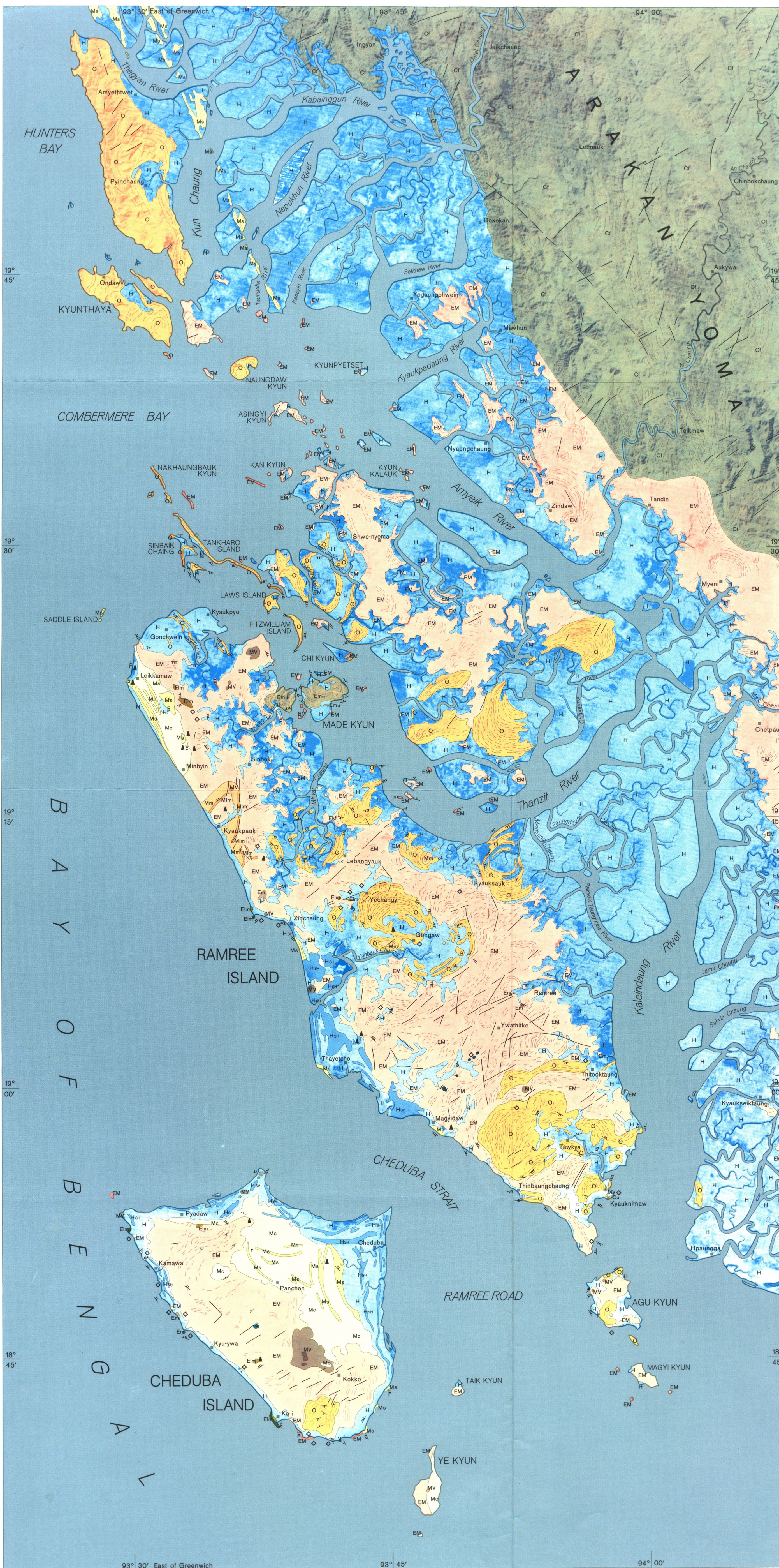


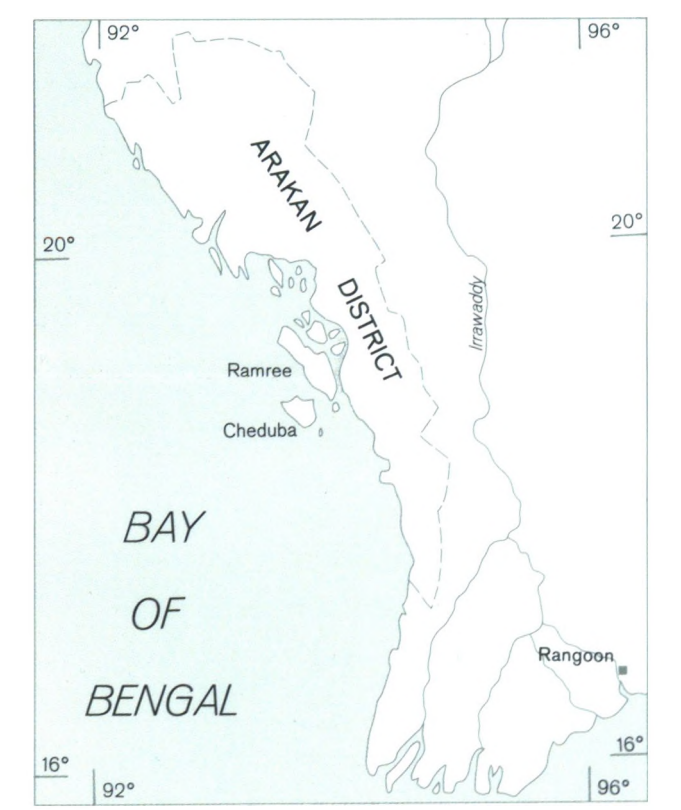
# CENTRAL ARAKAN COASTAL AREA / BURMA

GEOLOGICAL INTERPRETATION FROM  
LANDSAT - 1 - IMAGERY

1:250 000



Shore dunes and shore bars	H <sub>sd</sub>	} HOLOCENE
undifferentiated	H	
TERTIARY		
Sandstones	M <sub>s</sub>	} MIOCENE
Clays	M <sub>c</sub>	
Sane-Clay Formation	M <sub>m</sub>	} MIOCENE
Nga-Ox-conglomerate	M <sub>lm</sub>	
Yechangi-Turbidite-Formation	O	} OLILOCENE
Made Kyun-Turbidite-Formation	EM <sub>u</sub>	
Cherts	EM	} EOCENE
Nummulitic-sandstones	EM <sub>l</sub>	
undifferentiated	EM	} EOCENE
undifferentiated	EM	
CRETACEOUS		
Arakan-Flysch	Cl	
Red Radiolarian cherts	CR	
Mud volcanoes	MV	
Volcanics	V	
Serpentinites	S	
Allochthonous elements	◊	
PHOTOLINEATIONS		
Strike and dip of strata		
Faults and fractures		
Geological boundary		
STRIKE AND DIP		
 0° - 5°   6° - 29°   30° - 59°   60° - 85°   86° - 90°		
Productive oil wells	▲	
Village	■	



Interpretation of LANDSAT-1-Images: D. HELMCKE  
Ground-truth-data on Ramree and Cheduba Island: D. HELMCKE and S. RITZKOWSKI in cooperation with Myanmar Oil Corporation Rangoon and German Geological Advisory Group, Federal Institute for Geosciences and Natural Resources Hannover. Funded by Deutsche Forschungsgemeinschaft.

Made as engineering thesis in the course of studies of cartography at Technische Fachhochschule Berlin under the guidance of Prof. Dr. G. PÖHLMANN  
Cartographic design and production by KIRSTEN RIES and SILKE TAUBERT.  
Compiled and printed in Germany by TFH Berlin, Berlin 1979