



Crop diversity effects on temporal agricultural production stability across European regions

Lukas Egli^{1,2,3} · Matthias Schröter² · Christoph Scherber^{4,5} · Teja Tschardt^{6,7} · Ralf Seppelt^{2,8}

Received: 30 November 2020 / Accepted: 9 September 2021 / Published online: 5 October 2021
© The Author(s) 2021, corrected publication 2022

Abstract

Stabilizing agricultural production is fundamental to food security. At the national level, increasing the effective diversity of cultivated crops has been found to increase temporal production stability, i.e., the year-to-year stability of total caloric production of all crops combined. Here, we specifically investigated these effects at the regional level for the European Union and tested the effect of crop diversity in relation to agricultural inputs, soil properties, climate instability, and time on caloric, protein, and fat stability, as we hypothesized that the effect of diversity is context dependent. We further investigated these relationships for specific countries. We found that greater crop diversity was consistently associated with an increase in production stability, particularly in regions with large areas equipped for irrigation and low soil type diversity. For instance, in Spain and Italy, crop diversity showed the strongest positive effect among all predictors, while on the European level, the stabilizing effect of nitrogen use was substantially higher. In Germany, the crop diversity-stability relationship was weak, suggesting that crops react similarly to climatic, economic, and political factors or are grown in the same periods. With this study, we substantiate previous findings that crop diversity stabilizes agricultural caloric production and extend these with regard to protein and fat. The results elucidate the key drivers that enhance production stability for different European countries and regions, which is of key importance for a comparably productive agricultural region like Europe.

Keywords Agroecology · Climate change · Resilience · Sustainability

Communicated by Luis Lassaletta

✉ Lukas Egli
lukas.egli@ufz.de

Matthias Schröter
matthias.schroeter@ufz.de

Christoph Scherber
c.scherber@leibniz-zfmk.de

Teja Tschardt
ttschar@gwdg.de

Ralf Seppelt
ralf.seppelt@ufz.de

¹ Department of Ecological Modelling, UFZ—Helmholtz Centre for Environmental Research, Permoserstr. 15, 04318 Leipzig, Germany

² Department of Computational Landscape Ecology, UFZ—Helmholtz Centre for Environmental Research, Permoserstr. 15, 04318 Leipzig, Germany

³ Institute of Biochemistry and Biology, University of Potsdam, Maulbeerallee 2, 14469 Potsdam, Germany

⁴ Institute of Landscape Ecology, University of Muenster, Heisenbergstr. 2, 48149 Muenster, Germany

⁵ Centre for Biodiversity Monitoring, Zoological Research Museum Alexander Koenig, Adenauerallee 160, 53113 Bonn, Germany

⁶ Agroecology, Department of Crop Sciences, University of Goettingen, Grisebachstr. 6, 37077 Goettingen, Germany

⁷ Centre of Biodiversity and Sustainable Land Use (CBL), University of Goettingen, Platz der Göttinger Sieben 5, 37073 Goettingen, Germany

⁸ Institute of Geoscience and Geography, Martin-Luther-University Halle-Wittenberg, 06099 Halle (Saale), Germany

Introduction

Increasing the temporal stability of agricultural production is key to foster the resilience and reliability of agricultural systems and is thus fundamental to food security (Knapp and van der Heijden 2018), in particular in the light of climate change and rising demands for food (Challinor et al. 2014; Valin et al. 2014). While for a long time agricultural assessments have focused on agricultural production and productivity, understanding the temporal stability of agricultural production and its underlying drivers has only recently received more attention (Gaudin et al. 2015; Ray et al. 2015; KC et al. 2016; Raseduzzaman and Jensen 2017; Knapp and van der Heijden 2018; Mehrabi and Ramankutty 2019; Renard and Tilman 2019).

Resilience theory suggests that diversity reduces risks and increases resilience in agricultural systems or the ability to maintain functioning in the face of disturbance and change (Biggs et al. 2012; Mijatović et al. 2013; Kremen and Merenlender 2018). For example, if one crop fails due to climate instability and extreme events, other crops can compensate the losses (Yachi and Loreau 1999; Lin 2011; Raseduzzaman and Jensen 2017). Diversity encompasses variety (how many different elements), balance (how many of each element), and disparity (how different the elements are from one another) (Stirling 2007; Biggs et al. 2012). At the national level, it has been found that a greater effective diversity of cultivated crops based on the Shannon index increases temporal production stability, i.e., the year-to-year stability of the total caloric production of all crops combined (Renard and Tilman 2019; Egli et al. 2020).

Agricultural inputs such as fertilizer and irrigation further stabilize agricultural production (Rist et al. 2014; Ray et al. 2015; Knapp and van der Heijden 2018; Renard and Tilman 2019), potentially instead of or in addition to crop diversity. During the last decades, dependency on fertilizer and irrigation and the spatial coverage of their application have heavily increased, and hence yielded large production gains (Tilman et al. 2001; Foley et al. 2011). Favorable conditions to grow crops related to soils, topography, and climate might be further important to foster stable agricultural production (Pan et al. 2009). Increased soil type diversity is likely to increase temporal production stability, in particular if crop diversity is low because it fosters the asynchrony between different plots of the same crop (Coomes et al. 2019; Mehrabi and Ramankutty 2019). Finally, climate instability reduces temporal yield and production stability at the national level (Ray et al. 2015; Renard and Tilman 2019; Egli et al. 2020).

To better understand the effect of crop diversity and other factors on the temporal production stability of agricultural systems, these processes need to be investigated at different scales. To the best of our knowledge, regional assessments at a large spatial extent such as Europe are missing. Moreover, better understanding of these processes within political or economic unions or individual countries is particularly important because opportunities to implement policies to foster resilient food system are potentially higher. For example, within the European Union, the Common Agricultural Policy provides a framework to direct agricultural management, also with regard to sustainability targets (Louhichi et al. 2017; Früh-Müller et al. 2019). Subnational assessments can inform such policies in a more nuanced way. For example, if crop diversity would be found to stabilize agricultural production more effectively than agricultural inputs, this would provide a possibility for more sustainable management.

Here, we compiled long-term data at the regional level data in Europe and used linear and linear mixed-effects models to (i) study the effects of crop diversity on the year-to-year stability of total caloric, protein, and fat production (hereafter ‘production stability,’ ‘caloric stability,’ ‘protein stability,’ or ‘fat stability’) in relation to agricultural inputs, agricultural suitability, soil productivity, soil type diversity, climate instability, and time, and (ii) to investigate these relationships in specific countries. We hypothesize that besides crop diversity, soil productivity, soil type diversity, and agricultural inputs are positively associated with production stability, while climate instability and time are negatively related (Table 1). We further assume that the positive relationship of crop diversity with production stability is stronger in regions with lower soil productivity and soil type diversity, and with higher climate instability.

Materials and methods

We collected agricultural, soil, and climate data across the NUTS 2 regions (Nomenclature of Territorial Units for Statistics) as defined in the year 2013 for the European Union (including the UK) for up to four 10-year time intervals (1978–1987, 1988–1997, 1998–2007, 2008–2017). NUTS 2 regions typically reflect the second subdivision of a nation into subnational units. For rather small countries including Cyprus, Estonia, Latvia, Lithuania, Luxemburg, and Malta, the NUTS 2 level reflected the entire nation. For Germany, sufficient data was only available at the state level (NUTS 1). To exclude regions where crop cultivation is of very minor relevance, we sorted them by the average

Table 1 Response and explanatory variables and hypothesized effects on production stability. All variables were derived for each region and time interval

Variables	Definition	Hypothesized effects	Key references
Response variable			
Production stability	Year-to-year stability of total caloric, protein, or fat production (mean total production divided by the respective standard deviation)		Mehrabi and Ramankutty 2019; Renard and Tilman 2019; Egli et al. 2020
Explanatory variables (main effects)			
Crop diversity	Effective diversity of cultivated crops (exponential of Shannon index)	+ If one crop fails, other crops can compensate the losses	Gaudin et al. 2015; Raseduz-zaman and Jensen 2017; Renard and Tilman 2019
Nitrogen use	Total nitrogen application per unit cropland area	+ Higher nitrogen use leads to higher production also during unfavorable conditions and thus stabilizes temporal production	Knapp and van der Heijden 2018
Irrigation	Proportion of agricultural land equipped for irrigation	+ Increased irrigation leads to higher production also during unfavorable conditions and thus stabilizes temporal production	Renard and Tilman 2019
Soil productivity	Productivity index of soils in croplands based on soil, topographic and climatic criteria	+ Higher soil productivity leads to higher production also during unfavorable conditions and thus stabilizes temporal production	Pan et al. 2009; Schröter et al. 2021
Soil type diversity	Effective diversity of soil types (exponential of Shannon index)	+ A higher diversity of soil types buffers disturbances, because identical crops might react differently on different soil types	Coomes et al. 2019
Temperature/precipitation instability	Year-to-year instability of mean annual temperature and precipitation in cropland areas (- mean divided by standard deviation)	- Instable climates decrease the temporal stability of agricultural production	Ray et al. 2015; Renard and Tilman 2019
Time interval	Four ten-year time intervals (1978–1987, 1988–1997, 1998–2007, 2008–2017)	- Temporal production stability decreases over time due to climate change and other global change processes	
Interaction effects with crop diversity			
Agricultural inputs (nitrogen use, irrigation)		+/- Crop diversity enhances the effect of agricultural inputs, or the effect of crop diversity is highest in regions with low agricultural inputs	
Soil productivity		- The effect of crop diversity is highest in regions with marginal agricultural lands	
Soil type diversity		- The effect of crop diversity is highest in regions with homogeneous agricultural landscapes	Coomes et al. 2019
Climate instability (temperature, precipitation)		+ The effect of crop diversity is highest in regions with high climate instability	Yachi and Loreau 1999; Biggs et al. 2012

area of arable land between 1978 and 2017 in descending order and included regions up to a cumulated area of 99% of the total area of all regions. We further excluded regions in Ireland and the Netherlands because they use much of their fertilizer on pastures (Renard and Tilman 2019). We only included arable crops, for which nutrient

data could be clearly assigned (FAO 2001). To exclude crops of minor relevance, we sorted the remaining crops by the average harvested areas between 1978 and 2017 in descending order and only included crops up to a cumulated area of 99% of the total harvested area of all crops. Furthermore, we removed data points where harvested

area was above zero, but production was not reported or zero, or vice versa. For each time interval and region, we only included crops where harvested areas and production were reported for at least 8 years. In a last step, we removed areas where only one crop remained. Our final datasets consisted of 409 data points representing 161 regions and 18 crops (Table S1). Each data point represents one region in one time interval. Data for multiple time intervals was available for 81.99% of these regions. On average, the crops considered represent 44.78% of the arable land of these regions and 41.94% of the arable land reported in the Eurostat database. Details on the underlying data sources can be found in Table 2.

Response variables

To calculate production stability, we used agricultural production data of arable crops from the EUROSTAT database (Table 2). We converted crop-specific production from tons to calories, protein, and fat using standardized nutritive factors (Table 2). We note that other aspects could be considered to aggregate crops (Egli et al. 2021). To account for crop stability independent of long-term trends, we time-detrended annual production data by regressing annual total caloric production of all or individual crops on year squared for each time interval and region (Renard and Tilman 2019). We calculated caloric, protein, or fat stability as

$$P_R = \mu_R / \sigma_R \quad (1)$$

where μ_R is the mean of the non-time-detrended total regional caloric, protein, or fat production for each time interval and σ_R is the standard deviation of the respective time-detrended production (Mehrabi and Ramankutty 2019; Renard and Tilman 2019).

Explanatory variables

We used crop diversity, fertilizer, irrigation, soil productivity, soil type diversity, temperature and precipitation instability, and time as explanatory variables of production stability. Regarding crop diversity, we calculated effective diversity as the exponential of the Shannon diversity of the harvested areas of the different crops for each year and region (as reported in the EUROSTAT database) and calculated mean values for each time interval (Hill 1973).

To account for land use intensity, we included fertilizer use and irrigation. We used national data from the FAOSTAT database, as we wanted to cover a large temporal extent regarding agricultural production data (40 years), for which regional data is largely incomplete (Table 2). Therefore, we calculated mean nitrogen use for each time

interval and nation relative to the respective mean cropland area. For irrigation, we used the mean area equipped for irrigation relative to agricultural land for each time interval and nation.

To describe soil productivity, we used a soil productivity index within croplands based on soil, topographic, and climate criteria and in relation to potential productivity increase due to fertilization (Table 2). For each region we extracted the mean productivity index. We used the digital soil map of the world to calculate the soil type diversity as the exponential of the Shannon diversity of the different soil types within the agricultural areas of each region based on the CORINE land cover dataset of the year 2000 (Table 2).

To describe climate instability, we used gridded monthly temperature (°C) and precipitation (cm) data on 0.5-degree resolution (Table 2). For each region, we extracted mean temperature and precipitation during the growing season of major crops and within the agricultural areas as defined above (Table 2). We then calculated temperature and precipitation instability as the negative of the mean temperature and precipitation, respectively, over its standard deviation for each time interval and region (Renard and Tilman 2019). Finally, we included the four time intervals for which the other temporal variables were aggregated as an explanatory variable.

Statistical analyses

We used linear models to test the dependence of production stability on crop diversity, as well as on fertilizer, irrigation, soil productivity, soil type diversity, temperature and precipitation instability, and time. Moreover, we included pairwise interactions of crop diversity with agricultural management, soil, and climate variables. Production stability was log-normally distributed (AIC = 2429.65, 2407.69, and 2183.87 compared to AIC = 2663.72, 2689.97, and 2445.86 for a normal distribution for caloric, protein, and fat stability, respectively). To equalize spread and reduce leverage, we square root-transformed fertilizer use (explanatory variable). We scaled explanatory variables (mean-centered and divided by their standard deviations) to reduce remaining collinearity between main effects (Gelman and Hill 2006) and to make regression coefficients comparable. We tested both a linear model and a linear mixed-effects model fitting a random intercept for each nation. We based our results on the linear mixed-effects model (AIC = 609.15, 618.07, and 622.55 for caloric, protein, and fat stability, respectively) as it exceeded the performance of the linear model (AIC = 677.00, 680.77, and 624.63). The maximum variance inflation factor was 2.73, indicating that multicollinearity was successfully removed (Marquardt 1970).

Table 2 Datasets used in this study for preparing response and explanatory variables. Temporal extent reflects the time periods extracted for this study

Data	Reference	Description	Resolution; temporal extent	Unit	URL
Area harvested	European Commission 2019	Crop-specific harvested areas	NUTS2; 1978–2017	1000 ha	https://ec.europa.eu/eurostat/data/database
Production		Crop-specific production	NUTS2; 1978–2017	1000 t	
Crop nutrients	FAO 2001	Food balance sheets	NA	kcal/100 g	http://www.fao.org/docrep/003/x9892e/X9892e05.htm#P8217_125315
Nitrogen fertilizer	FAO 2019	Fertilizer use in agriculture	National; 1968–2017	t	http://www.fao.org/faostat/en/#data/RFN ; http://www.fao.org/faostat/en/#data/RA
Irrigation		Land area equipped for irrigation	National; 1968–2017	% of agricultural land	http://www.fao.org/faostat/en/#data/EL
Cropland		Cropland	National; 1968–2017	1000 ha	http://www.fao.org/faostat/en/#data/RL
Soil productivity	Tóth et al. 2013	Index for soil productivity in croplands	1 km; 2000	Index	https://esdac.jrc.ec.europa.eu/content/soil-biomass-productivity-maps-grasslands-and-pasture-croplands-and-forest-areas-european
Soil types	FAO 2007	Digital soil map of the world	1:5.000.000; NA	Soil type	http://www.fao.org/geonetwork/srv/en/main.home?uuid=446ed430-8383-11db-b9b2-000d939bc5d8
Land cover	EEA 2019	Land cover classes in Europe	100 m; 2000	Class	https://land.copernicus.eu/pan-european/corine-land-cover/clc-2000?tab=download
Temperature/precipitation	Willmott and Matsuura 2001; NOAA/OAR/ESRL/PSD 2017	Monthly temperature and precipitation	0.5°; 1968–2017	°C, cm	<i>UDeI_AirT_Precip</i> data provided by NOAA/OAR/ESRL PSD, Boulder, Colorado, USA: https://www.esrl.noaa.gov/psd/data/gridded/data.UDeI_AirT_Precip.html
Growing season	Sacks et al. 2010	Crop planting dates	0.5°; NA	Day of year	http://nelson.wisc.edu/sage/data-and-models/crop-calendar-dataset/ArcINFO-5min.php

To assess whether these relationships are similar for individual countries, we used separate linear regression models for countries with more than 40 data points (Germany, Spain, France, and Italy). As fertilizer and irrigation data was only available on the national level, we removed these variables. Moreover, we did not include the interaction terms to reduce the number of regression parameters in relation to the sample size (Heinze et al. 2018).

We refitted all selected models with 1000 bootstrap replications to assess the robustness of our conclusions (Heinze et al. 2018). We used the statistical software package R 3.5.1 (R Core Team 2019) run via RStudio (RStudio Team 2015) for data analysis. To assess distributional assumptions in the response variables, we used the ‘fitdistrplus’ package in

R (Delignette-Muller and Dutang 2015). For linear mixed-effect models, we used the ‘nlme’ library in R based on restricted maximized log-likelihood (‘REML’) (Pinheiro et al. 2019). All data that support the findings of this study, as well as related codes for data preparation and analyses, are openly available here: <https://doi.org/10.5281/zenodo.5458018>.

Results

Production stability was highest in regions of Denmark, Germany, Greece, Italy, Poland, Portugal, southern Sweden, and the UK (Fig. 1a–c), as well as southern Finland for fat stability. Crop diversity was particularly high in

Portugal and the Baltic states (Fig. 1d). Nitrogen use was highest in Belgium, Germany, and the UK, and irrigation was highest in Greece, Italy, and Romania (Fig. 1e–f). Soil productivity was generally higher in Central and Northern Europe (Fig. 1g). Regions with high soil type diversity were found in all countries except in northern Europe and the Baltic states (Fig. 1h). Temperature instability was highest in Eastern and Northern Europe, while precipitation instability was particularly high on the Iberian Peninsula and in Southeastern Europe (Fig. 1i–j).

Regarding the main effects, nitrogen use was positively and significantly associated with caloric stability ($p < 0.05$), while temperature and precipitation instability showed a significant negative relationship ($p < 0.05$; Fig. 2; Table S2). Crop diversity ($p = 0.14$), irrigation ($p = 0.62$), soil productivity ($p = 0.09$), and time ($p = 0.75$) showed a positive, and soil type diversity ($p = 0.12$) a negative relationship, but all of them were insignificant. However, in regions with large areas equipped for irrigation, crop diversity was positively and significantly associated with caloric stability ($p < 0.05$; Fig. 3; Table S2). Furthermore, the positive effect of crop diversity was larger in regions with low nitrogen use ($p = 0.29$), soil productivity ($p = 0.52$), soil type diversity ($p = 0.06$), and precipitation instability ($p = 0.43$), and in regions with high temperature instability ($p = 0.20$), yet these interactions were insignificant. The variance in caloric stability explained by the fixed effects (R^2 marginal) was 0.30 and the total variance explained (R^2 conditional) was 0.58. Except for time, the observed direction of main effect and interactions were identical in at least 78.8% of the

bootstrap replicates (Table S2). Crop diversity, for example, was positively associated with caloric stability in 91.7% of the replications, and its positive interaction with irrigation in 99.4% of the replications.

These relationships were nearly identical for protein stability (Fig. 2, Table S2). Regarding fat stability, the overall patterns were also very similar, but crop diversity and time showed a significant and stronger positive relationship ($p < 0.05$). Moreover, the interaction with irrigation was not significant ($p = 0.16$) and the effect of crop diversity was larger in areas with high precipitation instability ($p = 0.25$), but not in areas with high temperature instability ($p = 0.74$). The variance in protein and fat stability explained by the fixed effects (R^2 marginal) were 0.30 and 0.22, and the total variances explained (R^2 conditional) were 0.57 and 0.29, respectively.

In Germany, none of the variables was significant ($p > 0.05$) (Fig. 4; Table S3) and the variance explained was relatively low ($R^2 = 0.22$). In Spain ($R^2 = 0.63$), France ($R^2 = 0.55$), and Italy ($R^2 = 0.28$), crop diversity showed the strongest positive association with caloric stability among all variables, though the effect was insignificant in France ($p = 0.13$). Soil productivity was negatively associated with caloric stability in France ($p < 0.05$), while soil type diversity showed a positive but insignificant effect in Italy ($p = 0.44$). Climate stability generally showed a negative relationship across all four countries, except regarding temperature instability in Spain. In Spain and France, the effect of time was significant and negative ($p < 0.05$), indicating that caloric stability decreased during the last decades.

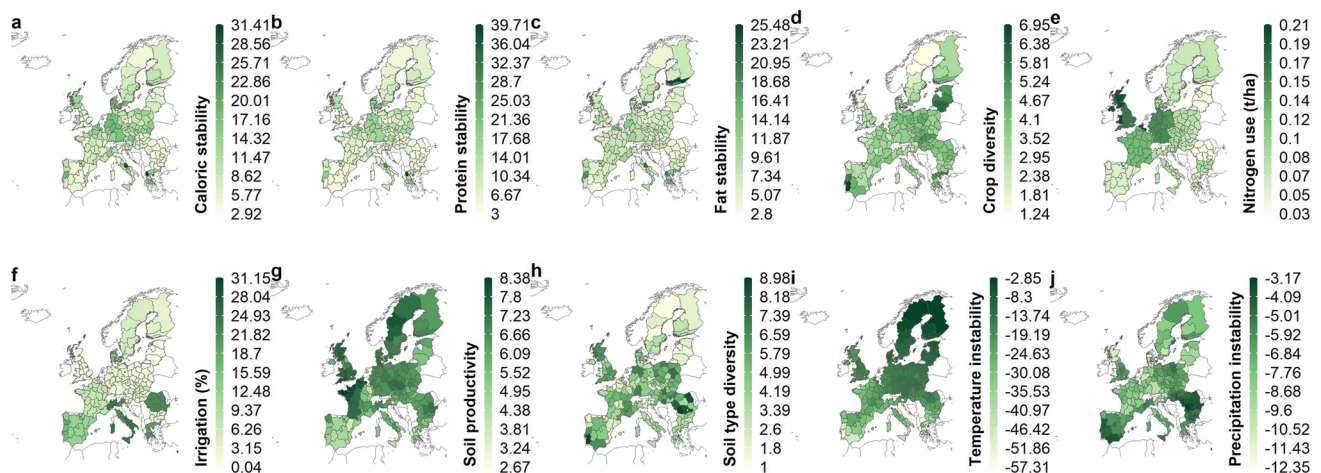


Fig. 1 Spatial patterns of the response and explanatory variables. **a** Caloric stability, **b** protein stability, **c** fat stability, **d** crop diversity, **e** nitrogen use, **f** area equipped for irrigation, **g** soil productivity

index, **h** soil type diversity, **i** temperature instability, and **j** precipitation instability. Values are averaged over all time intervals ($n = 161$). Regions excluded from the analyses are shown in white

Fig. 2 Determinants of caloric (green), protein (blue), and fat (orange) stability. Regression coefficients (\pm SE) for all main effects included in the linear mixed-effects regression models ($n = 409$). Caloric, protein, and fat stability (mean divided by standard deviation) were log-transformed, and nitrogen use was square root-transformed. Each predictor variable was standardized to zero mean and one standard deviation across all regions and time intervals. * $p < 0.05$; ** $p < 0.01$; *** $p < 0.001$; NS = not significant

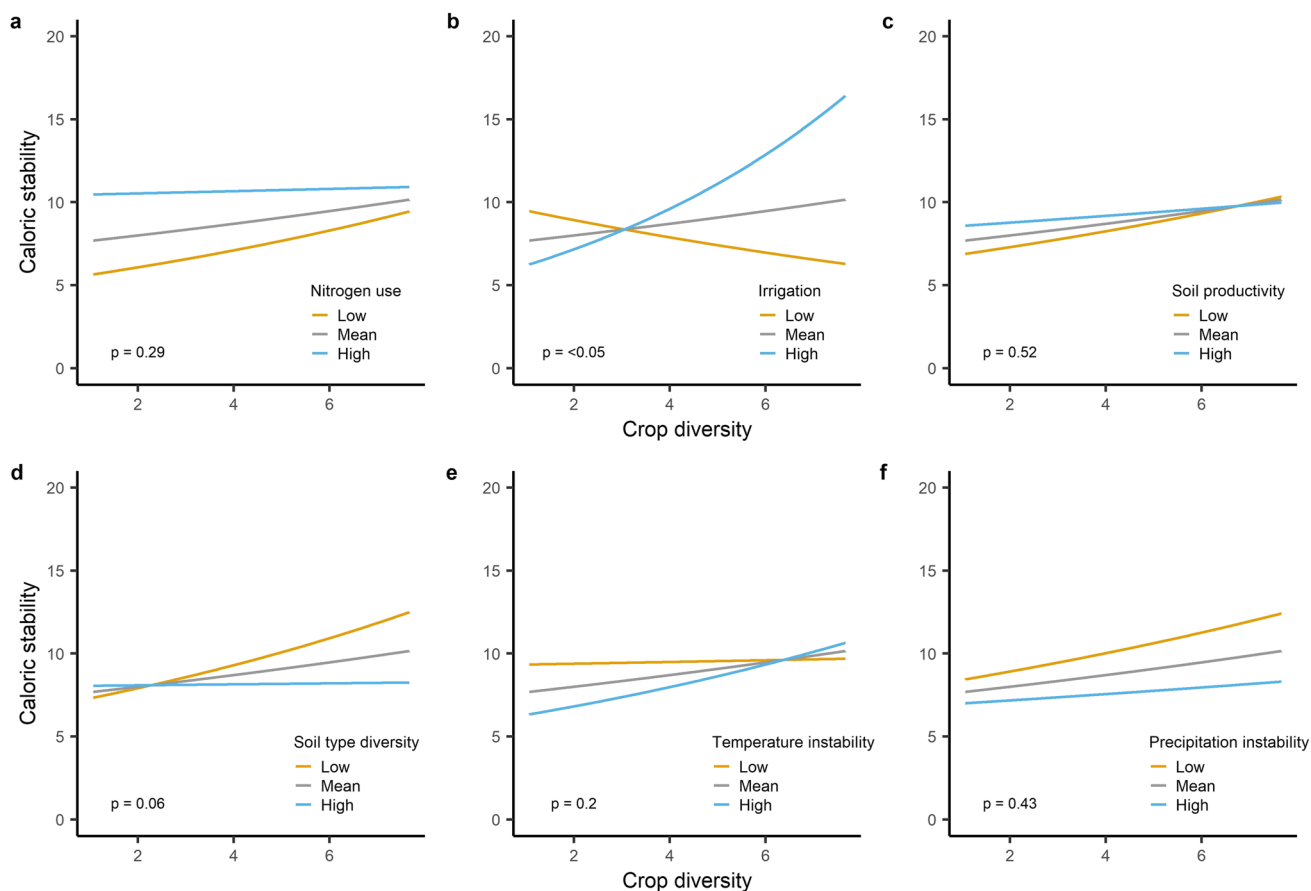
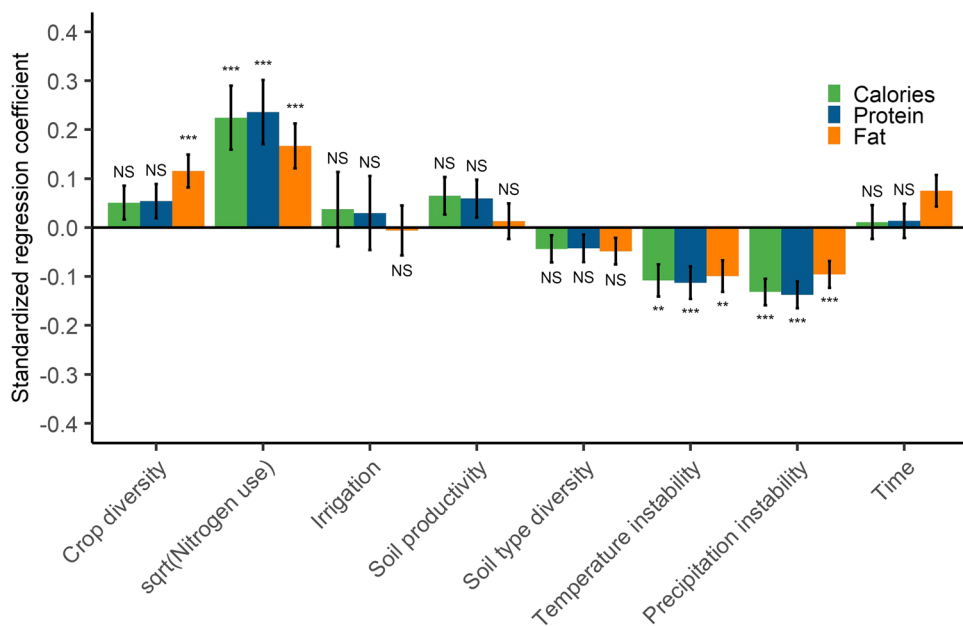


Fig. 3 Effect of crop diversity in combination with the other explanatory variables on caloric stability ($n = 409$). Interaction of crop diversity with **a** nitrogen use, **b** area equipped for irrigation, **c** soil productivity, **d** soil type diversity, **e** temperature instability, and **f** precipitation instability and associated p values. Predicted values for

caloric stability were back-transformed from log-transformation. Predictions were calculated using the observed range of crop diversity, while keeping all the other variables at their mean values or the second variable of the interaction at mean $- 1$ SD (low) or mean $+ 1$ SD (high)

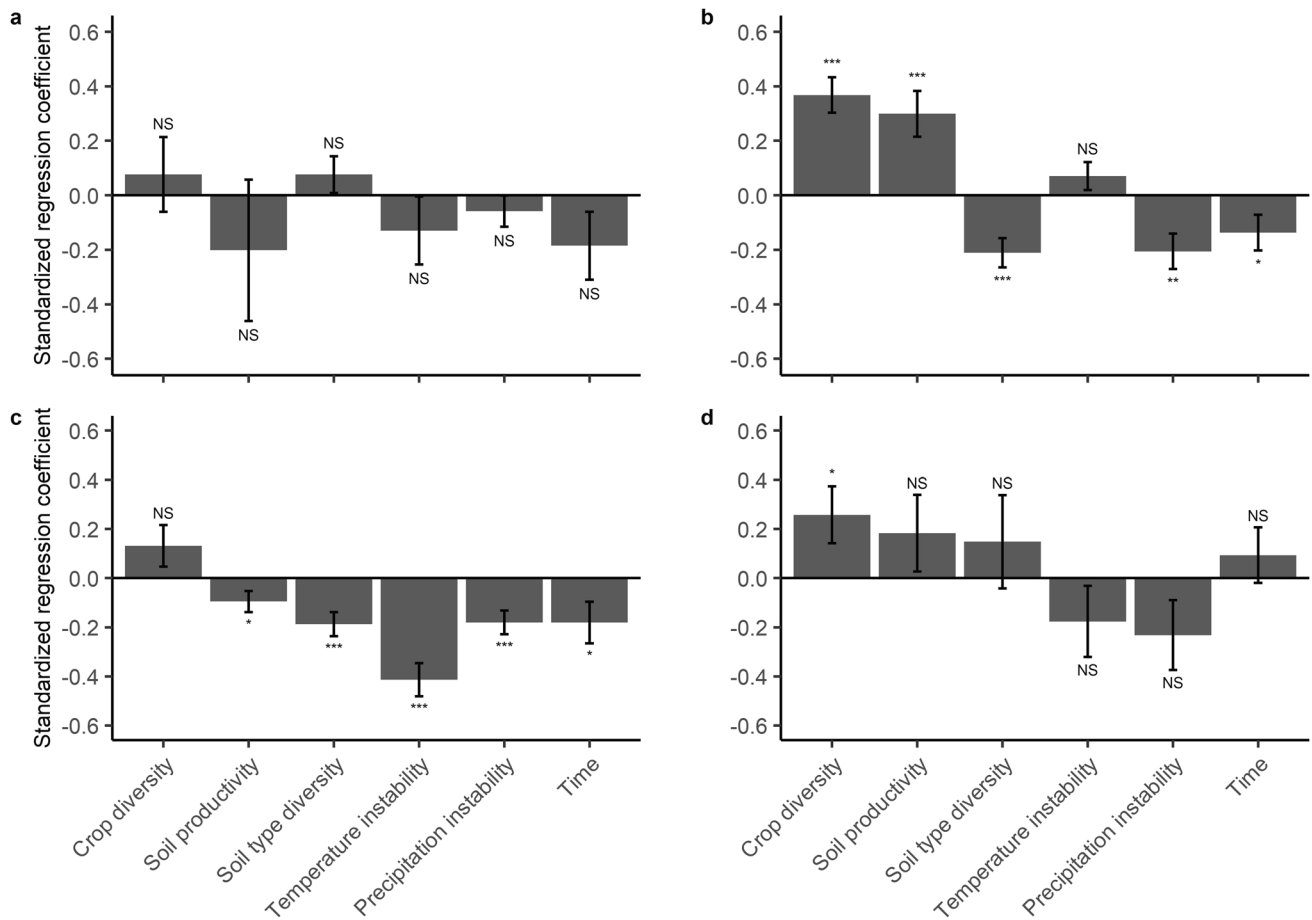


Fig. 4 Determinants of caloric stability in Germany (**a**, $n=43$), Spain (**b**, $n=56$), France (**c**, $n=64$), and Italy (**d**, $n=50$). Regression coefficients (\pm SE) for all effects included in the linear regression models. Caloric stability (mean divided by standard deviation) was log-

transformed. Each predictor variable was standardized to zero mean and one standard deviation across all regions and time intervals. * $p < 0.05$; ** $p < 0.01$; *** $p < 0.001$; NS = not significant

Discussion

Our results show that crop diversity is in general positively associated with production stability at the regional level in the European Union, particularly in regions with large areas equipped for irrigation and with low soil type diversity. We found evidence that the positive effect of crop diversity is higher in regions with instable temperatures, supporting resilience theory according to which diversity provides an insurance to maintain functioning in the face of disturbance and change (Yachi and Loreau 1999; Biggs et al. 2012). While our results generally confirm the stabilizing effect of crop diversity, its importance is generally less pronounced compared to the national level globally (Renard and Tilman 2019; Egli et al. 2020). Regarding fat stability, however, the effect of crop diversity was stronger. This highlights the importance of evaluating nutritional aspects in the food security debate that go beyond the assessment of calories produced (Hertel and Baldos 2016; Berners-Lee et al. 2018).

Across all countries and variables considered, nitrogen use had the largest positive effect on production stability. Accordingly, agricultural inputs are not only relevant to close yields gaps (Mueller et al. 2012), but also to increase temporal production stability (Knapp and van der Heijden 2018; Renard and Tilman 2019). The effect of nitrogen fertilizer in the European Union was more important than globally (Renard and Tilman 2019), which is not surprising given that a large share of European croplands is characterized by medium to high intensity (Václavík et al. 2013; Levers et al. 2018). However, this dependency on agricultural inputs has serious implications for biodiversity and ultimately human well-being (Tscharrntke et al. 2012; Loos et al. 2014; West et al. 2014; Beckmann et al. 2019), and associated specialization may also increase climatic sensitivity of agriculture (Ortiz-Bobea et al. 2018). Furthermore, nitrogen fertilizer already reached a peak year in 1983 (Seppelt et al. 2014). Our results indicate that

crop diversity could partially compensate the stabilizing effect of nitrogen use (negative yet insignificant interaction). Accordingly, more integrated approaches to tackle the multiple challenges agricultural landscapes face today such as crop diversification, renewable inputs, and other agroecological principles are needed (Gurr et al. 2016; Landis 2017; Kremen and Merenlender 2018; Lee et al. 2019; Seppelt et al. 2020). For example, more diverse cropping systems, beyond just organic agriculture, could potentially achieve higher production with lower environmental impacts than today (Seufert et al. 2012; Iversen et al. 2014; Tscharrntke et al. 2015; Muller et al. 2017; Knapp and van der Heijden 2018; Sirami et al. 2019).

Regarding soil characteristics, our results were mixed. As expected, soil productivity showed a positive association with production stability that was comparable to the effect of crop diversity (Pan et al. 2009). Yet insignificant, but largely stable, the negative interaction between crop diversity and soil productivity indicates that crop diversity is a promising mechanism to stabilize agricultural production in marginal areas (Shahid and Al-Shankiti 2013). While the main effect of soil type diversity was insignificant and negative, we found evidence that in regions with low soil type diversity, crop diversity is needed to increase field diversity and thus the stability of agricultural production (Coomes et al. 2019). While this also indicates that crop diversification could decrease production stability in areas with high soil type diversity, such trade-offs might be avoided with diversification at the farm level (Egli et al. 2021).

We found that climate instability substantially decreased temporal production stability in Europe. Thus, expected increases in climate instability in the light of climate change may not only lead to production losses (Challinor et al. 2014; Liang et al. 2017; Zhao et al. 2017), but also to lower temporal production stability. However, climate seems to play a minor role compared to the effect size of nitrogen use. This indicates that at the smaller scale, management factors are more relevant. Accordingly, until recent, climate instability in Europe can be buffered by agricultural management, which was also observed for agricultural productivity in the USA (Liang et al. 2017). However, this might change due to increasing risks of climate change-induced soil erosion, droughts, and other aspects that affect agricultural productivity (Mezősi et al. 2013; Deutsch et al. 2018).

The individual country models revealed important differences regarding the determinants of production stability. For example, in Spain and Italy, crop diversity showed the strongest positive effect among all predictors. In contrast, crop diversity in Germany had no clear positive effect, indicating the cultivation of crops that react

similarly to climatic, economic, and political factors or are grown in the same periods (Egli et al. 2020, 2021), which poses risks to production stability, in particular in the light of climate change effects such as the extreme droughts in 2018–2020, as well as rising perturbations in global markets (Suweis et al. 2015; Ortiz-Bobea et al. 2018). In contrast to the patterns observed at the European level, caloric stability decreased over time in Spain and France. Given their importance in European agriculture, this might have implications for food security. These country-specific findings should be considered in strategies to stabilize agricultural production.

The study presented here faces two major limitations. First, data availability and quality of the underlying datasets are limited. After processing, several regions and crops were excluded due to data gaps and our dataset represented only around 45% of the regional arable land. Nevertheless, this should not systematically bias our results as production stability and crop diversity refer to the same data pool. This is also indicated by the robustness of our main conclusions. Furthermore, long-term information on nitrogen use and irrigation was only available at the national level, for all crops combined and with regard to the total agricultural area including pastures for irrigation. The effects of management on production stability might also differ across different regions and climates. The aggregation of climate and soil data to the regional level may introduce additional biases (Hoffmann et al. 2016). Second, the explanatory power of the fixed effects (R^2 marginal = 0.22–0.30) indicates that other important determinants of production stability are missing, for example, related to farmers' behavior and knowledge, as well as other aspects determining total factor productivity, including pesticide use, capital stock in agriculture (sum of investment and physical assets, including machinery), storage facilities, and modern technologies, but also ecosystem services that are important for maintaining productivity on the long term (Coomes et al. 2019). However, temporal and spatial data coverage of these potential determinants is yet limited.

This study opens new avenues for future research. Future assessments could include more crop types, as well as different crop varieties and functional traits, as they most likely play a fundamental role for resilience (Ficiciyan et al. 2018). Further studies could also target other aspects of resilience, disturbances, and agricultural diversity (Letourneau et al. 2011; Lin 2011; Cottrell et al. 2019; Egli et al. 2019). Moreover, the combined effects of crop diversity and other factors on agricultural production and temporal production stability and in particular the identification of synergies, e.g., through intercropping, and strategies to reduce fertilizer dependency merit further attention (Raseduzzaman and Jensen 2017; Martin-Guay et al. 2018).

Conclusion

Our study suggests that besides nitrogen use, crop diversity increases temporal production stability at the regional level in Europe, particularly in regions with large areas equipped for irrigation and with low soil type diversity. Our results also show that climate instability reduces temporal production stability and that the stabilizing effect of crop diversity seems to be higher in regions with high temperature instability. These findings emphasize the need for integrated land-use planning including diversification and a sustainable use of agricultural inputs.

Supplementary Information The online version contains supplementary material available at <https://doi.org/10.1007/s10113-021-01832-9>.

Funding Open Access funding enabled and organized by Projekt DEAL. L.E. acknowledges funding from the Helmholtz Association (Research School ESCALATE, VH-KO-613). We thank Volker Grimm and Zia Mehrabi for constructive discussions and Mick Wu for statistical support.

Open Access This article is licensed under a Creative Commons Attribution 4.0 International License, which permits use, sharing, adaptation, distribution and reproduction in any medium or format, as long as you give appropriate credit to the original author(s) and the source, provide a link to the Creative Commons licence, and indicate if changes were made. The images or other third party material in this article are included in the article's Creative Commons licence, unless indicated otherwise in a credit line to the material. If material is not included in the article's Creative Commons licence and your intended use is not permitted by statutory regulation or exceeds the permitted use, you will need to obtain permission directly from the copyright holder. To view a copy of this licence, visit <http://creativecommons.org/licenses/by/4.0/>.

References

- Beckmann M, Gerstner K, Akin-Fajiyiye M, Ceaşu S, Kambach S et al (2019) Conventional land-use intensification reduces species richness and increases production: a global meta-analysis. *Glob Chang Biol* 25:1941–1956. <https://doi.org/10.1111/gcb.14606>
- Berners-Lee M, Kennelly C, Watson R, Hewitt CN (2018) Current global food production is sufficient to meet human nutritional needs in 2050 provided there is radical societal adaptation. *Elem Sci Anthr* 6:52. <https://doi.org/10.1525/elementa.310>
- Biggs R, Schlüter M, Biggs D, Bohensky EL, BurnSilver S et al (2012) Toward principles for enhancing the resilience of ecosystem services. *Annu Rev Environ Resour* 37:421–448. <https://doi.org/10.1146/annurev-environ-051211-123836>
- Challinor AJ, Watson J, Lobell DB, Howden SM, Smith DR et al (2014) A meta-analysis of crop yield under climate change and adaptation. *Nat Clim Chang* 4:287–291. <https://doi.org/10.1038/nclimate2153>
- Coomes OT, Barham BL, MacDonald GK, Ramankutty N, Chavas JP (2019) Leveraging total factor productivity growth for sustainable and resilient farming. *Nat Sustain* 2:22–28. <https://doi.org/10.1038/s41893-018-0200-3>
- Cottrell RS, Nash KL, Halpern BS, Remenyi TA, Corney SP et al (2019) Food production shocks across land and sea. *Nat Sustain* 2:130–137
- Delignette-Muller ML, Dutang C (2015) *fitdistrplus*: an R package for fitting distributions. *J Stat Softw* 64:1–34. <https://doi.org/10.18637/jss.v064.i04>
- Deutsch CA, Tewksbury JJ, Tigchelaar M, Battisti DS, Merrill SC et al (2018) Increase in crop losses to insect pests in a warming climate. *Science* 361:916–919. <https://doi.org/10.1126/science.aat3466>
- EEA (2019) Corine Land Cover (CLC) 2000, Version 2020_20u1. <https://land.copernicus.eu/pan-european/corine-land-cover/clc-2000?tab=download>. Accessed 15 November 2021
- Egli L, Mehrabi Z, Seppelt R (2021) More farms, less specialized landscapes, and higher crop diversity stabilize food supplies. *Environ Res Lett* 16:55015. <https://doi.org/10.1088/1748-9326/abf529>
- Egli L, Schröter M, Scherber C, Tschamntke T, Seppelt R (2020) Crop asynchrony stabilizes food production. *Nature* 588:E7–E12. <https://doi.org/10.1038/s41586-020-2965-6>
- Egli L, Weise H, Radchuk V, Seppelt R, Grimm V (2019) Exploring resilience with agent-based models: state of the art, knowledge gaps and recommendations for coping with multidimensionality. *Ecol Complex* 40:100718. <https://doi.org/10.1016/j.ecocom.2018.06.008>
- European Commission (2019) EUROSTAT Database. <https://ec.europa.eu/eurostat/data/database>. Accessed 17 December 2019
- FAO (2001) Food balance sheets: A handbook. Rome, Rome, Italy
- FAO (2007) Digital Soil Map of the World. <http://www.fao.org/geonetwork/srv/en/main.home?uuid=446ed430-8383-11db-b9b2-000d939bc5d8>. Accessed 2 November 2020
- FAO (2019) FAOSTAT Database. <http://www.fao.org/faostat/en/#data>. Accessed 30 November 2020
- Ficicayan A, Loos J, Sievers-glotzbach S, Tschamntke T (2018) More than yield: ecosystem services of traditional versus modern crop varieties revisited. *Sustainability* 10:2834. <https://doi.org/10.3390/su10082834>
- Foley JA, Ramankutty N, Brauman KA, Cassidy ES, Gerber JS et al (2011) Solutions for a cultivated planet. *Nature* 478:337–342. <https://doi.org/10.1038/nature10452>
- Früh-Müller A, Bach M, Breuer L, Hotes S, Koellner T et al (2019) The use of agri-environmental measures to address environmental pressures in Germany: spatial mismatches and options for improvement. *Land Use Policy* 84:347–362. <https://doi.org/10.1016/j.landusepol.2018.10.049>
- Gaudin ACM, Tolhurst TN, Ker AP, Janovicek K, Tortora C et al (2015) Increasing crop diversity mitigates weather variations and improves yield stability. *PLoS ONE* 10:e0113261. <https://doi.org/10.1371/journal.pone.0113261>
- Gelman A, Hill J (2006) Data analysis using regression and multilevel/hierarchical models. Cambridge University Press, Cambridge
- Gurr GM, Lu Z, Zheng X, Xu H, Zhu P et al (2016) Multi-country evidence that crop diversification promotes ecological intensification of agriculture. *Nat Plants* 2:16014. <https://doi.org/10.1038/nplants.2016.14>
- Heinze G, Wallisch C, Dunkler D (2018) Variable selection – a review and recommendations for the practicing statistician. *Biometrical J* 60:431–449. <https://doi.org/10.1002/bimj.201700067>
- Hertel TW, Baldos ULC (2016) Attaining food and environmental security in an era of globalization. *Glob Environ Chang* 41:195–205. <https://doi.org/10.1016/j.gloenvcha.2016.10.006>
- Hill MO (1973) Diversity and evenness: a unifying notation and its consequences. *Ecology* 54:427–432. <https://doi.org/10.2307/1934352>
- Hoffmann H, Zhao G, Asseng S, Bindi M, Biernath C et al (2016) Impact of spatial soil and climate input data aggregation on regional yield simulations. *PLoS ONE* 11:1–23. <https://doi.org/10.1371/journal.pone.0151782>
- Iverson AL, Marín LE, Ennis KK, Gonthier DJ, Connor-Barrie BT et al (2014) Do polycultures promote win-wins or trade-offs in

- agricultural ecosystem services? A meta-analysis. *J Appl Ecol* 51:1593–1602. <https://doi.org/10.1111/1365-2664.12334>
- Kb KC, Pant LP, Fraser EDG, Shrestha PK, Shrestha D et al (2016) Assessing links between crop diversity and food self-sufficiency in three agroecological regions of Nepal. *Reg Environ Chang* 16:1239–1251. <https://doi.org/10.1007/s10113-015-0851-9>
- Knapp S, van der Heijden MGA (2018) A global meta-analysis of yield stability in organic and conservation agriculture. *Nat Commun* 9:1–9. <https://doi.org/10.1038/s41467-018-05956-1>
- Kremen C, Merenlender AM (2018) Landscapes that work for biodiversity and people. *Science* (80-) 362:eaau6020. <https://doi.org/10.1126/science.aau6020>
- Landis DA (2017) Designing agricultural landscapes for biodiversity-based ecosystem services. *Basic Appl Ecol* 18:1–12. <https://doi.org/10.1016/j.baee.2016.07.005>
- Lee H, Lautenbach S, Nieto APG, Bondeau A, Cramer W et al (2019) The impact of conservation farming practices on Mediterranean agro-ecosystem services provisioning—a meta-analysis. *Reg Environ Chang* 19:2187–2202. <https://doi.org/10.1007/s10113-018-1447-y>
- Letourneau DK, Ambrecht I, Rivera BS, Lerma JM, Carmona EJ et al (2011) Does plant diversity benefit agroecosystems? A synthetic review. *Ecol Appl* 21:9–21. <https://doi.org/10.1890/09-2026.1>
- Levers C, Müller D, Erb K, Haberl H, Jepsen MR et al (2018) Archetypical patterns and trajectories of land systems in Europe. *Reg Environ Chang* 18:715–732. <https://doi.org/10.1007/s10113-015-0907-x>
- Liang XZ, Wu Y, Chambers RG, Schmoltd DL, Gao W et al (2017) Determining climate effects on US total agricultural productivity. *Proc Natl Acad Sci* 114:E2285–E2292. <https://doi.org/10.1073/pnas.1615922114>
- Lin BB (2011) Resilience in agriculture through crop diversification: adaptive management for environmental change. *Bioscience* 61:183–193. <https://doi.org/10.1525/bio.2011.61.3.4>
- Loos J, Abson DJ, Chappell MJ, Hanspach J, Mikulcak F et al (2014) Putting meaning back into “sustainable intensification.” *Front Ecol Environ* 12:356–361. <https://doi.org/10.1890/130157>
- Louhichi K, Ciaian P, Espinosa M, Colen L, Perni A et al (2017) Does the crop diversification measure impact EU farmers’ decisions? An assessment using an Individual Farm Model for CAP Analysis (IFM-CAP). *Land Use Policy* 66:250–264. <https://doi.org/10.1016/j.landusepol.2017.04.010>
- Marquardt DW (1970) Generalized inverses, ridge regression, biased linear estimation, and nonlinear estimation. *Technometrics* 12:591–612
- Martin-Guay MO, Paquette A, Dupras J, Rivest D (2018) The new Green Revolution: sustainable intensification of agriculture by intercropping. *Sci Total Environ* 615:767–772. <https://doi.org/10.1016/j.scitotenv.2017.10.024>
- Mehrabi Z, Ramankutty N (2019) Synchronized failure of global crop production. *Nat Ecol Evol* 3:780–786. <https://doi.org/10.1038/s41559-019-0862-x>
- Mezősi G, Meyer BC, Loibl W, Aubrecht C, Csorba P et al (2013) Assessment of regional climate change impacts on Hungarian landscapes. *Reg Environ Chang* 13:797–811. <https://doi.org/10.1007/s10113-012-0326-1>
- Mijatović D, Van Oudenhoven F, Eyzaguirre P, Hodgkin T (2013) The role of agricultural biodiversity in strengthening resilience to climate change: towards an analytical framework. *Int J Agric Sustain* 11:95–107. <https://doi.org/10.1080/14735903.2012.691221>
- Mueller ND, Gerber JS, Johnston M, Ray DK, Ramankutty N et al (2012) Closing yield gaps through nutrient and water management. *Nature* 490:254–257. <https://doi.org/10.1038/nature11420>
- Muller A, Schader C, Scialabba NE, Brüggemann J, Isensee A et al (2017) Strategies for feeding the world more sustainably with organic agriculture. *Nat Commun* 8:1290. <https://doi.org/10.1038/s41467-017-01410-w>
- NOAA/OAR/ESRL/PSD (2017) University of Delaware Air Temperature & Precipitation. https://www.esrl.noaa.gov/psd/data/gridded/data/UDel_AirT_Precip.html. Accessed 2 November 2021
- Ortiz-Bobea A, Knippenberg E, Chambers RG (2018) Growing climatic sensitivity of U.S. Agriculture linked to technological change and regional specialization. *Sci Adv* 4:eaat4343. <https://doi.org/10.1126/sciadv.aat4343>
- Pan G, Smith P, Pan W (2009) The role of soil organic matter in maintaining the productivity and yield stability of cereals in China. *Agric Ecosyst Environ* 129:344–348. <https://doi.org/10.1016/j.agee.2008.10.008>
- Pinheiro J, Bates D, DebRoy S, Sarkar D, R Core Team (2019) nlme: linear and Nonlinear Mixed Effects Models. <https://cran.r-project.org/package=nlme>. Accessed 17 December 2019
- R Core Team (2019) R: A language and environment for statistical computing
- Raseduzzaman M, Jensen ES (2017) Does intercropping enhance yield stability in arable crop production? A meta-analysis. *Eur J Agron* 91:25–33. <https://doi.org/10.1016/j.eja.2017.09.009>
- Ray DK, Gerber JS, MacDonald GK, West PC (2015) Climate variation explains a third of global crop yield variability. *Nat Commun* 6:5989. <https://doi.org/10.1038/ncomms6989>
- Renard D, Tilman D (2019) National food production stabilized by crop diversity. *Nature* 571:257–260. <https://doi.org/10.1038/s41586-019-1316-y>
- Rist L, Felton A, Nyström M, Troell M, Sponseller RA et al (2014) Applying resilience thinking to production ecosystems. *Ecosphere* 5:1–11. <https://doi.org/10.1890/ES13-00330.1>
- RStudio Team (2015) RStudio: Integrated Development for R
- Sacks WJ, Deryng D, Foley JA, Ramankutty N (2010) Crop planting dates: an analysis of global patterns. *Glob Ecol Biogeogr* 19:607–620. <https://doi.org/10.1111/j.1466-8238.2010.00551.x>
- Schröter M, Egli L, Brüning L, Seppelt R (2021) Distinguishing anthropogenic and natural contributions to coproduction of national crop yields globally. *Sci Rep* 11:10821. <https://doi.org/10.1038/s41598-021-90340-1>
- Seppelt R, Arndt C, Beckmann M, Martin EA, Hertel T (2020) Deciphering the biodiversity-production mutualism in the global food security debate. *Trends Ecol Evol*
- Seppelt R, Manceur AM, Liu J, Fenichel EP, Klotz S (2014) Synchronized peak-rate years of global resources use. *Ecol Soc* 19:50. <https://doi.org/10.5751/ES-07039-190450>
- Seufert V, Ramankutty N, Foley JA (2012) Comparing the yields of organic and conventional agriculture. *Nature* 485:229–232. <https://doi.org/10.1038/nature11069>
- Shahid SA, Al-Shankiti A (2013) Sustainable food production in marginal lands—case of GDLA member countries. *Int Soil Water Conserv Res* 1:24–38. [https://doi.org/10.1016/S2095-6339\(15\)30047-2](https://doi.org/10.1016/S2095-6339(15)30047-2)
- Sirami C, Gross N, Baillod AB, Bertrand C, Carrié R et al (2019) Increasing crop heterogeneity enhances multitrophic diversity across agricultural regions. *Proc Natl Acad Sci* 116:16442–16447. <https://doi.org/10.1073/pnas.1906419116>
- Stirling A (2007) A general framework for analysing diversity in science, technology and society. *J R Soc Interface* 4:707–719. <https://doi.org/10.1098/rsif.2007.0213>
- Suweis S, Carr JA, Maritan A, Rinaldo A, Odorico PD (2015) Resilience and reactivity of global food security. *Proc Natl Acad Sci* 112:6902–6907. <https://doi.org/10.1073/pnas.1512971112>
- Tilman D, Fargione J, Wolff B, D’Antonia C, Dobson A et al (2001) Forecasting agriculturally driven global environmental change. *Science* 292:281–284. <https://doi.org/10.1126/science.1057544>
- Tóth G, Gardi C, Bódis K, Ivits É, Aksoy E, et al (2013) Continental-scale assessment of provisioning soil functions in Europe. *Ecol Process* 2:1–18. <https://doi.org/10.1186/2192-1709-2-32>

- Tscharntke T, Clough Y, Jackson L, Motzke I, Perfecto I et al (2012) Global food security, biodiversity conservation and the future of agricultural intensification. *Biol Conserv* 151:53–59. <https://doi.org/10.1016/j.biocon.2012.01.068>
- Tscharntke T, Milder JC, Schroth G, Clough Y, Declerck F et al (2015) Conserving biodiversity through certification of tropical agroforestry crops at local and landscape scales. *Conserv Lett* 8:14–23. <https://doi.org/10.1111/conl.12110>
- Václavík T, Lautenbach S, Kuemmerle T, Seppelt R (2013) Mapping global land system archetypes. *Glob Environ Chang* 23:1637–1647. <https://doi.org/10.1016/j.gloenvcha.2013.09.004>
- Valin H, Sands RD, van der Mensbrugge D, Nelson GC, Ahammad H et al (2014) The future of food demand: understanding differences in global economic models. *Agric Econ* 45:51–67. <https://doi.org/10.1111/agec.12089>
- West PC, Gerber JS, Engstrom PM, Mueller ND, Brauman KA et al (2014) Leverage points for improving global food security and the environment. *Science* 345:325–328. <https://doi.org/10.1126/science.1246067>
- Willmott CJ, Matsuura K (2001) Terrestrial Air Temperature and Precipitation: Monthly and Annual Time Series (1950 - 1999). http://climate.geog.udel.edu/~climate/html_pages/README.ghcn_ts2.html
- Yachi S, Loreau M (1999) Biodiversity and ecosystem productivity in a fluctuating environment: the insurance hypothesis. *Proc Natl Acad Sci* 96:1463–1468. <https://doi.org/10.1073/pnas.96.4.1463>
- Zhao C, Liu B, Piao S, Wang X, Lobell DB et al (2017) Temperature increase reduces global yields of major crops in four independent estimates. *Proc Natl Acad Sci U S A* 114:9326–9331. <https://doi.org/10.1073/pnas.1701762114>

Publisher's note Springer Nature remains neutral with regard to jurisdictional claims in published maps and institutional affiliations.