

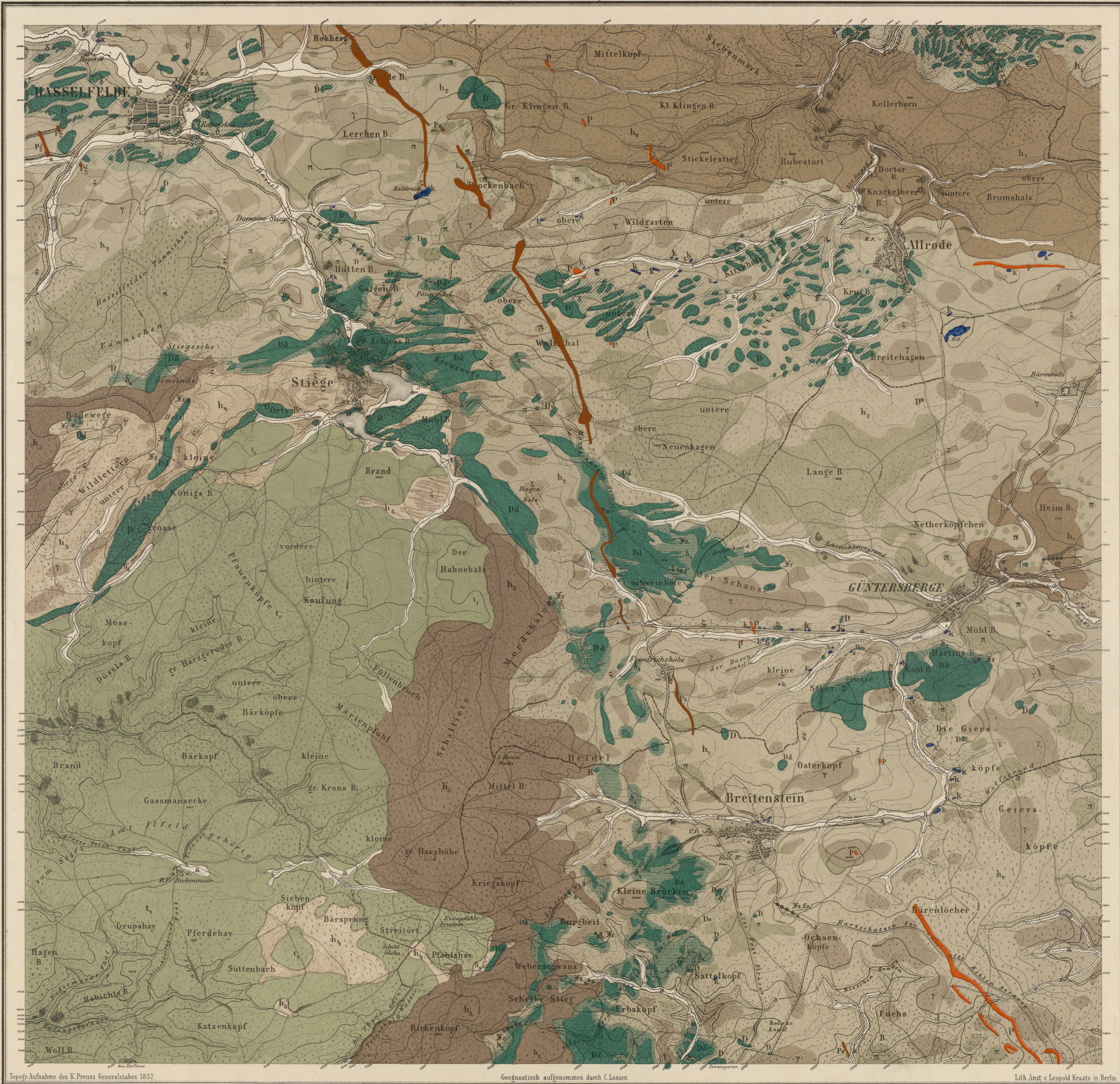
Lin. 1

Kart. B 140 4331

Grad-Abtheilung 51 der Breite, 28/29 der Länge, Bande VII, Blatt 4.

(222 Blankenburg)

239 Hasselfelde.



Längens. Maassstab 1:25,000  
 (240 Harzgerode)

Beschung. Maassstab  
 für die Horizontalen bei 20, 100m, 200m, 300m, 400m, 500m, 600m, 700m, 800m, 900m, 1000m, 1100m, 1200m, 1300m, 1400m, 1500m, 1600m, 1700m, 1800m, 1900m, 2000m, 2100m, 2200m, 2300m, 2400m, 2500m, 2600m, 2700m, 2800m, 2900m, 3000m, 3100m, 3200m, 3300m, 3400m, 3500m, 3600m, 3700m, 3800m, 3900m, 4000m, 4100m, 4200m, 4300m, 4400m, 4500m, 4600m, 4700m, 4800m, 4900m, 5000m, 5100m, 5200m, 5300m, 5400m, 5500m, 5600m, 5700m, 5800m, 5900m, 6000m, 6100m, 6200m, 6300m, 6400m, 6500m, 6600m, 6700m, 6800m, 6900m, 7000m, 7100m, 7200m, 7300m, 7400m, 7500m, 7600m, 7700m, 7800m, 7900m, 8000m, 8100m, 8200m, 8300m, 8400m, 8500m, 8600m, 8700m, 8800m, 8900m, 9000m, 9100m, 9200m, 9300m, 9400m, 9500m, 9600m, 9700m, 9800m, 9900m, 10000m.

Älteres Hercynisches Schiefer-Gebirge. (- F. G. H. Barrande.)											
h <sub>1</sub>	h <sub>2</sub>	h <sub>3</sub>	h <sub>4</sub>	h <sub>5</sub>	h <sub>6</sub>	h <sub>7</sub>	h <sub>8</sub>	h <sub>9</sub>	h <sub>10</sub>	h <sub>11</sub>	h <sub>12</sub>
Tanner Grauwacke (u. Klattenschiefer)	Wieder-Schiefer	Kalkstein-Einlager im Wieder-Schiefer	Kiesel-schiefer-Einlager im Wieder-Schiefer	Gräu-wacken-Einlager im Wieder-Schiefer	Quar-zische Einlager im Wieder-Schiefer	Ab-wichende Schiefer des Harzes	Zorger Schiefer	Kiesel-schiefer-Einlager im Zorger Schiefer	Gräu-wacken-Einlager im Zorger Schiefer	Unterdevon	Alluvium
Platt-Porphyr	Schwarz- Porphyr d. Harzes	Gräuer- Porphyr d. Harzes	Dichter Diabas	körniger Diabas	Contact-til-lungen d. dichten Diabase	Contact-til-lungen d. körnigen Diabase (u. schwarzen Porphyre)	Erzgänge Fe. Eisen. Cu. Kupfer	Mineralgänge Q. Quarz	Pingen Fe. Eisen. Cu. Kupfer		